



Cardinia

Equestrian Strategy

2024 - 2034



Acknowledgement of Country

Cardinia Shire Council recognises and values the Bunurong and Wurundjeri peoples as the traditional custodians of the land that makes up Cardinia Shire.

Cardinia Shire's name is derived from the Bunurong or Wadawurrung word 'Kar-din-yarr', meaning 'look to the rising sun' or 'close to the sunrise'. Council's logo, which includes a motif of the rising sun, reflects this meaning.

Cardinia Shire Council acknowledges the right of Aboriginal and Torres Strait Islander peoples to live according to their values, beliefs, and customs.

Council is committed to developing and strengthening relationships and supporting traditional land management practices of open space within the Shire. Council supports the reconciliation process, which promotes mutual respect and understanding of Aboriginal and Torres Strait Islander peoples, their history, culture and ongoing connection and stewardship of this land.



Contents

Executive Summary	04	Implementation Plan	36
Introduction	05	How We Will Deliver the Strategy	37
About Cardinia Shire	06	Investment Prioritisation Principles	38
Our Plans and Strategies	07	Implementation Plan	40
What is driving the Equestrian Strategy?	10	Appendices	46
Equestrian Participation	12	Equestrian Trail Categories	48
Community Consultation Summary	14	Equestrian Participation by Club and Facility	50
Equestrian Facilities - Classification and Provision	16	Map of Potential Future Trails and Connections	51
Equestrian Trails and Facilities	17	Small Area Map 1 (Southern Sub-Region)	52
Provision of Equestrian Facilities	18	Small Area Map 2 (Beaconsfield, Pakenham Upper, Dewhurst, Officer)	53
Equestrian Facilities	19	Small Area Map 3 (Upper Beaconsfield)	54
Equestrian Facilities Classification	20	Small Area Map 4 (Bunyip and surrounds)	55
Equestrian Trails	21	Small Area Map 5 (Maryknoll and surrounds)	56
Vision and Objectives of the 2024 - 2034 Equestrian Strategy	22	Small Area Map 6 (Nar Nar Goon North, Bunyip North, Garfield North, Tynong North, Tonimbuk)	57
Strategic Outcomes of the Equestrian Strategy	23	Small Area Map 7 (Gembrook, Cockatoo, Bunyip State Park)	58
Key Recommendations	24		
Sub-region Summaries and Recommendations	28		
Growth Sub-region	30		
Northern Sub-region	32		
Southern Sub-region	34		

Executive Summary



Introduction

Cardinia Shire offers a diverse array of residential settings, from semi-rural to urban growth areas, and is expected to see more than 40,000 additional residents over the next 10 years. Equestrian continues to be a popular activity in the Shire, particularly in places that are suitable for horse ownership and horse riding. The 2024 – 2034 Equestrian Strategy aims to ensure that Cardinia Shire Council can continue to address the needs of its equestrian community alongside its changing demographic and geographic landscape.

The 2023 - 2034 Equestrian Strategy has incorporated a detailed review of the original Cardinia Equestrian Strategy (2014) and created an updated framework to guide the development of trails and facilities over the next 10 years. The Strategy has reviewed and considered the previous recommendations and revised them where required. The updated document aims to create recommendations that are achievable within the current operating environment and have the best chances of implementation.

The Equestrian Strategy has been created through the following three stages:

Stage 1: Background review – a desktop analysis of relevant Cardinia Shire Council strategies and reports, analysis of participation trends, review of demographic data, review of the 2014 Strategy and interviews with Cardinia Shire Council staff.

Stage 2: Consultation and facility assessments – review of the 2021 Equestrian Community Survey and audits of equestrian trails and facilities in Cardinia Shire.

Stage 3: Draft and Final Strategy – preparation of the Draft Strategy for public exhibition and the Final Strategy for Cardinia Shire Council endorsement.

Key themes of the Equestrian Strategy are...



About Cardinia Shire

Cardinia Shire is located on Greater Melbourne's south-east metropolitan boundary and is one of 10 fast-growing peri-urban Local Government Authorities, comprising the perimeter between Victoria's metropolitan and rural areas.

Data sourced and adapted from forecast.id.com.au/Cardinia (December 2022)

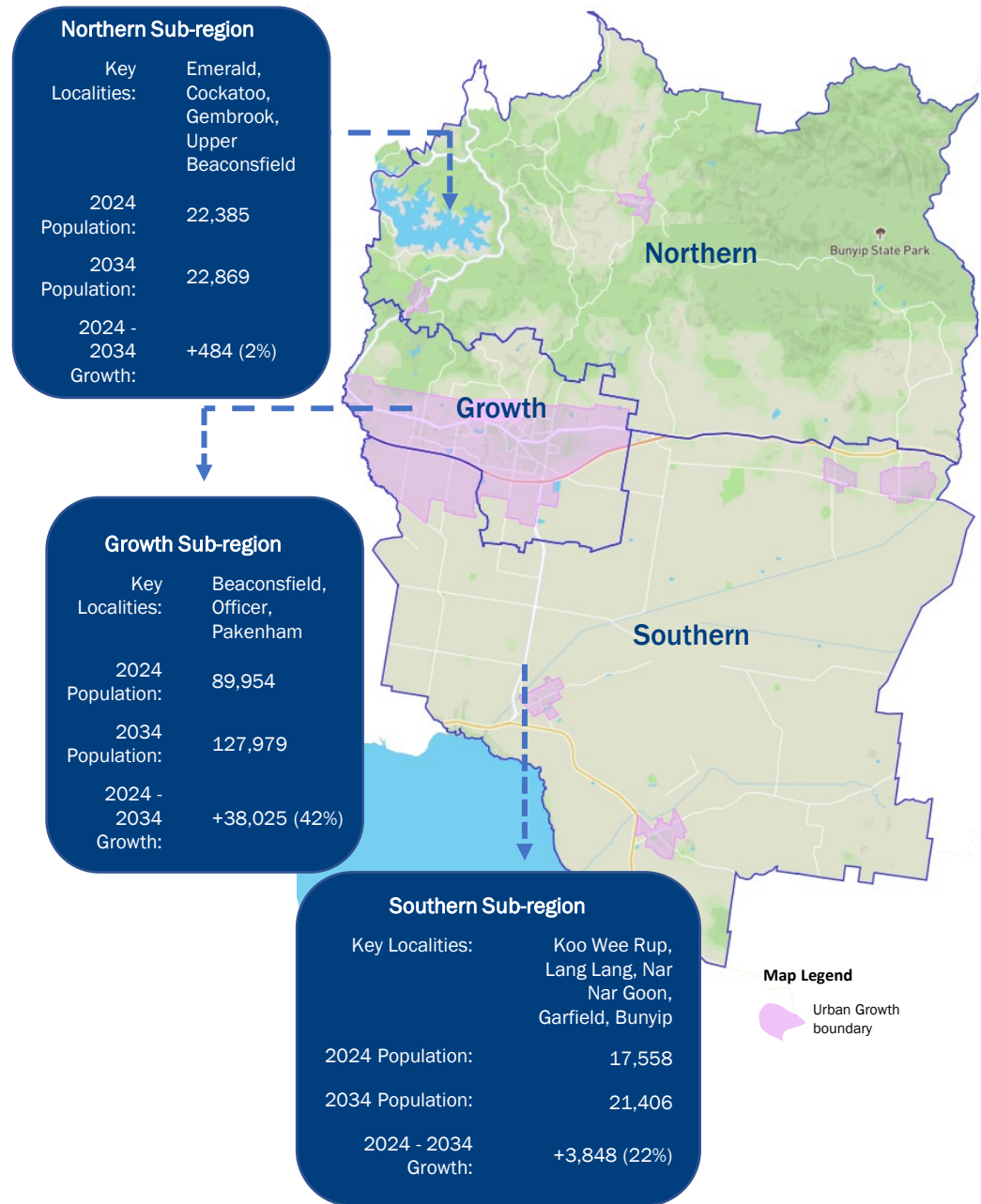
Between now and 2034, Cardinia Shire's population is expected to increase by more than 40,000 people. This is primarily due to the Growth Sub-region including the areas of Beaconsfield, Officer and Pakenham which will account for 90% of all population growth. The Northern and Southern Sub-regions will expect much smaller projections.

Population increases and urban expansion sees some impacts on equestrian activities, which is evident in the Growth Sub-region where only a small number of trails and facilities remain.

The Northern and Southern Sub-regions will continue to be suitable for equestrian activities and horse ownership, as they anticipate smaller population growth and appropriate land use/zoning. The Northern Sub-region offers the most appealing opportunity for equestrian activities, due to its varied terrain, landscape and natural aesthetic. The Southern Sub-region is less diverse but will continue to contribute to the equestrian network via its recreation reserves, showground and pony clubs.

The survey of the equestrian community undertaken as part of the Strategy (see page 14-15) found the majority of respondents owned a horse and were female, mostly aged above 35 and predominately aged between 45-54. This cohort will increase by approximately 5,000 people across Cardinia Shire to 2034*. Participation in sport and recreational activities typically become less frequent throughout older stages of life, especially for females. As equestrian challenges this trend, there is significant opportunity to support this cohort to stay healthy, active and connected.

*source: <https://forecast.id.com.au/cardinia>



Our Plans and Strategies

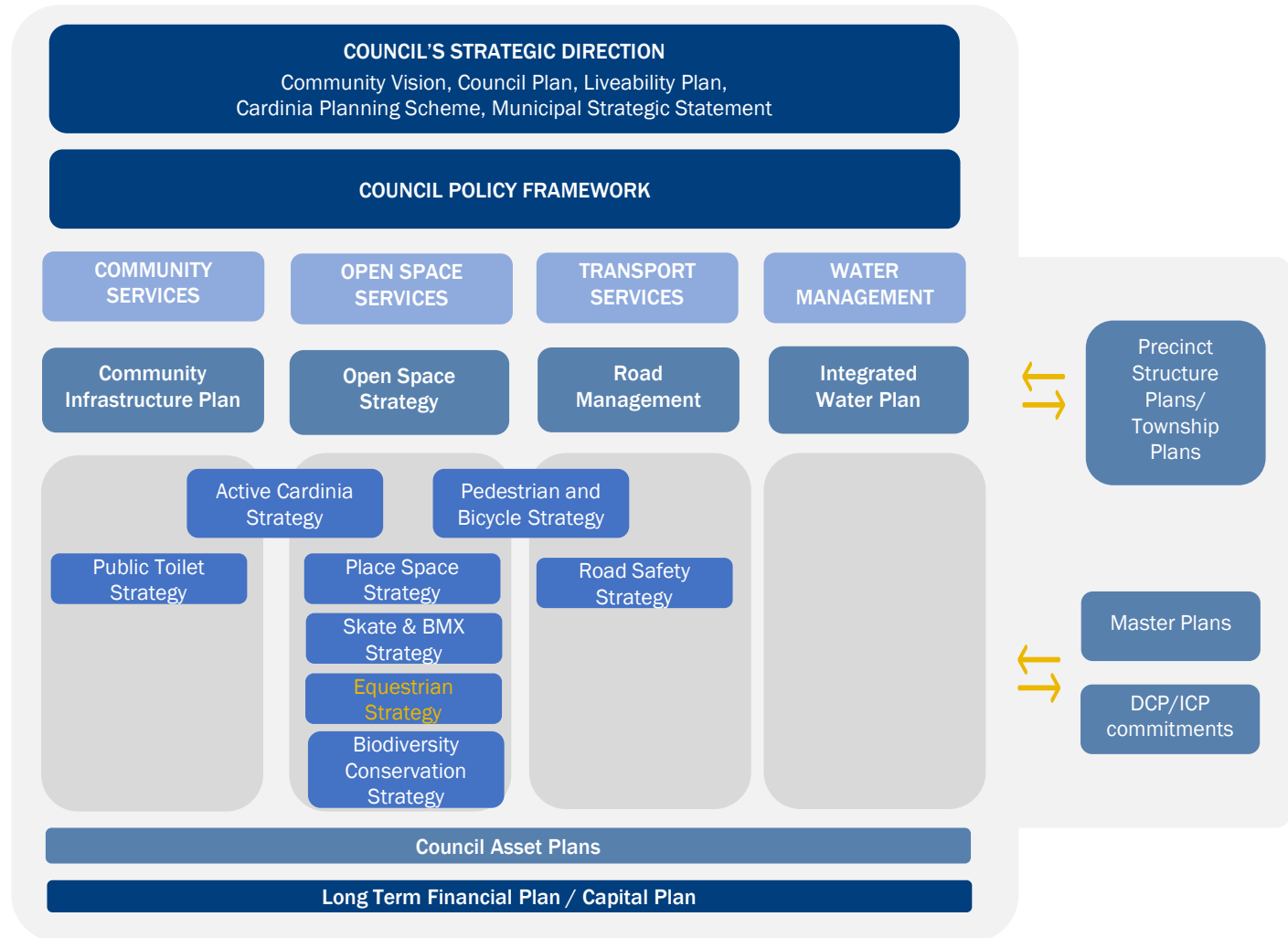
The 2024 - 2034 Equestrian Strategy is one of Cardinia Shire Council's Open Space Services strategic documents.

Documents considered key to the development of the Equestrian Strategy include Cardinia Shire Council's:

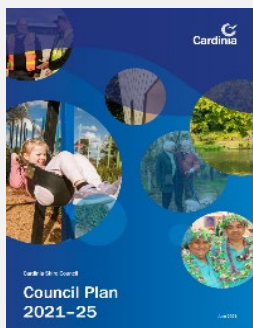
- Open Space Strategy;
- Active Cardinia Strategy;
- Biodiversity and Conservation Strategy; and
- Pedestrian & Bicycle Strategy.

These documents all include recommendations to support improved physical health and wellbeing through a sustainable, safe and connected environment.

The recommendations within the Equestrian Strategy align with these documents as well as the Cardinia Shire Council Plan, Community Vision, Asset Plan and Long-Term Financial Plan. These have guided the scope of recommendations and ensured that identified actions can achieve the objectives of Council within its financial capabilities.



Further detail of Cardinia Shire strategies that guide and influence the Equestrian Strategy are outlined below.

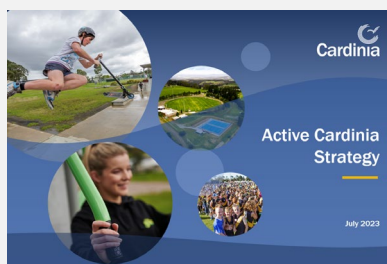


The Equestrian Strategy helps to deliver the outcomes across the five focus areas of the **Council Plan 2021 - 2025**. The Strategy is centred within the *Liveable Places* focus area of the Council Plan 2021-25 by planning for accessible community infrastructure for sport and active recreation and providing inclusive and connected open spaces and places.



Cardinia Shire Council's Open Space Strategy 2023 - 2033

establishes a framework to plan, deliver and maintain open space to create a network of enticing, inclusive, well connected, sustainable and equitable open space to meet current and future needs of the community.



Active Cardinia Strategy 2023 - 2033

Outlines a road map to create a more active and healthy community, through providing increased access and opportunity to participation in sport and active recreation. The Equestrian Strategy leverages the key pillars and recommendations within the Active Cardinia Strategy to plan, develop, activate and promote places and spaces that increase physical activity.



Victorian Government Active Victoria Strategy 2022 - 2026

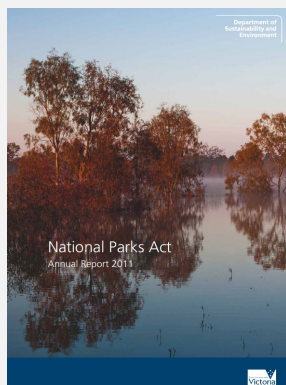
This document aims to provide a consolidated approach to the improvement in participation in sport and recreation from a state-wide perspective. The Equestrian Strategy will aim to assist in delivering the objectives of 'Connecting Communities, Building Value and Enduring Legacy'.



Victorian Government Fair Access Policy Roadmap

The Victorian Government is leading the delivery of a fairer and more equitable approach to sport and active recreation to increase positive health outcomes, and level the playing field for all genders.. The Roadmap includes the requirement for each Local Government Authority to develop a gender equitable access and use policy and action plan which will be applicable to public assets, policies and programs.

Further detail of documents and strategies of our key partners which guide and influence the Equestrian Strategy are outlined below.



Parks Victoria National Parks Act

The National Parks Act establishes the statutory basis for the protection, use and management of national parks covering nearly 3.45 million hectares. The document provides a comprehensive overview of the various activities, programs, and initiatives related to natural

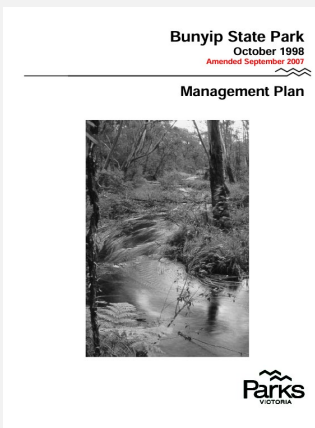
resource management and conservation in Victoria. It provides detail around the research, monitoring, environmental management, fire management and pest, plant and animal management undertaken to protect and preserve the natural values of Victoria's parks and reserves. This document specifically applies to the Bunyip State Park which is recognised within the Parks Act. The Bunyip State Park is significant to the Equestrian Strategy as it plays an important role in the equestrian trail network.



Crown Land Reserves Act

The Crown Land Reserves Act (1978) outlines the reservation and management of Crown land for public purposes. The Act also ensures that public land in Victoria is utilised and benefits the community in a way that preserves its value and significance. There are several equestrian facilities within Cardinia Shire that are located

on Crown Land and therefore subject to the Act. Key components of the Act that relate to these facilities include the appointment of committees of management to oversee their use and maintenance, as well as granting leases and licences over the facilities (including to Council).



Parks Victoria Bunyip State Park Management Plan

The Bunyip State Park Management Plan establishes a long-term framework to protect the Park's special conservation and cultural values and to provide better facilities and services for visitors. The key aspects of the plan that relate to the Equestrian Strategy include: Conservation and Biodiversity – including strategies to protect and enhance the parks natural environment. Recreation and Tourism – provision for sustainable recreational activities and tourism including developing and maintaining tracks and trails. Education and Interpretation – enhance visitor understanding and appreciation of the park's natural and cultural values through educational programs, interpretive signage and information materials.

What is driving the Equestrian Strategy?

The 2024 - 2034 Equestrian Strategy is influenced by a range of factors that require a coordinated response.

These factors were identified via the activities associated with this report including:

- A review of the 2014 Equestrian Strategy
- A review of new strategic context as it relates to Cardinia Shire Council
- Analysis of Cardinia Shire's population trends and forecasts
- Analysis of equestrian participation trends
- Audit of all Cardinia Shire equestrian facilities and trails
- Over 300km of trail inspections (excluding Bunyip State Park and Kurth Kiln Regional Park)
- Extensive consultation with the Cardinia equestrian community and other land managers including surrounding LGAs, Equestrian Victoria Parks Victoria, DEECA, DTP and Melbourne Water.



Education and Safety

Cardinia Shire's population is growing quickly, impacting its ability to accommodate equestrian trails and facilities in some areas. Population increases also see greater traffic volumes and busier roads. Educating the community and equestrians to improve safety and awareness around trails and facilities is needed.



A Plan for the Future

There is a need to undertake a 10 year plan for equestrian trails and facilities where they will not be affected by urban development, can be sustained long term, and can offer more shared use opportunities.



Asset Management and Maintenance

22% of trails were identified as 'not being maintained at all' via the equestrian community survey. Maintenance and renewal activities need further focus and must be driven by data and insights to address gaps in infrastructure.



Equestrian Participation

There are approximately 1,000 equestrian club participants in Cardinia Shire in addition to many informal trail users. With most participants being female and aged 35+; equestrian activities contribute to the health and wellbeing of this cohort.



Partnerships for collaborative outcomes

There are different approaches to land management and ownership of trails and facilities in Cardinia Shire. Greater collaboration to plan, invest, advocate and activate infrastructure is needed to increase shared outcomes.



Infrastructure Suitability & Sustainability

Greater coordination and development of the equestrian trail and facility network requires facilities to be fit for purpose, align with their designated classification and be delivered in a manner that is viable and sustainable.



More support for volunteers

Most equestrian facilities are delivered by volunteer run committees and clubs. A review of support mechanisms and educational opportunities that build capacity and generate participation outcomes is required.



Increased Promotion

There is limited information on the use of equestrian trails and facilities as well as educational material for the broader community on behaviour around horses.



Equestrian Participation

Equestrian participation in Cardinia Shire is well represented and those that participate do so as a hobby, sport or business**.

Equestrian participation can be classified through various disciplines including, but not limited to, trail riding, dressage, show jumping, eventing, western pleasure, showing and mounted games.

Based on the latest AusPlay data (Australia's largest national activity survey) there are:

- In excess of 320,000 Australians participating in equestrian activities in 2022, the equivalent of 1.3% of the national population for adults (aged 15+) and 0.9% of children (aged <14)*.
- Victoria accounted for approximately 30% of all equestrian participants in 2022, or approximately 97,000 people*.

In 2022, membership of equestrian clubs in Cardinia Shire was in excess of 1,000 participants^ (excludes those that participate in equestrian outside of organised clubs, activities or events).

Applying the Victorian average participation rate (i.e. 1.3%) to Cardinia Shire it equates to approximately 1,688 participants today, which is higher than the current quoted membership of 1,000. Based on a participation rate of 1.3% in 2034, this would see an increase of 1,239 additional equestrian participants.

Through the survey and AusPlay data, it is generally accepted that equestrian participation is unique in that it is an activity that can occur across the course of a person's lifetime, and that the frequency of participation can range from infrequently to most days.

320,000+

Equestrian participants nationally*

83%

Equestrian participants nationally are female*

97,000+

Equestrian participants in Victoria*

48%

Of adult equestrian participants participate in a non-formal capacity*

1,000+

Cardinia Shire equestrian club participants^

45-54_{y.o.}

Largest age cohort of Cardinia equestrian participants**

*Sport Australia. AusPlay Participation Dashboards. 2022. www.clearinghouseforsport.gov.au/research/ausplay/results

**Cardinia Shire Equestrian Strategy 2021 Community Survey Results

^ 2021/22 Cardinia participation survey

Equestrian Participation

Whilst there are many different styles and disciplines of equestrian participation, they are generally pursued by three types of participant. Through the 2021 Cardinia Equestrian Community Survey, these are outlined below.

Typical participant type		
Leisure	Includes equestrians of all ages and abilities who ride less frequently and so do in an unstructured or informal manner. These users will likely seek out accessible and safe facilities and trails where riding and schooling of horses can be highly controlled.	68% of equestrian community survey respondents say their equestrian interest is a hobby*
Enthusiast	Enthusiasts are likely to ride often and use both equestrian facilities and trails to complement their schooling. Enthusiasts are likely to seek more technical trails and equestrian infrastructure such as cross-country courses and varied terrain. Enthusiasts may also compete in local or regional events and be a member of a club/association.	52% of equestrian community survey respondents indicated they are a member of an equestrian club*
Sport	Competitive equestrians who ride multiple times per week and are members of a club, association or peak body sanctioned to host events. They will seek a higher standard of equestrian facility and associated infrastructure and/or more technical trails that involve a greater variety or challenge.	Sport user types may also derive income from their competitive pursuits or associated activities such as instructors, riders guides and trainers.

*via the 2021 Cardinia Equestrian Community Survey



Community Consultation Summary

Consultation with Cardinia's Equestrian Community sought feedback on:

- How and when equestrian trails and facilities are used;
- The current issues affecting the equestrian community; and
- Suggested improvements to equestrian trails and facilities.

Equestrian community surveys completed	251
Online map interactions	150

The survey and interactive map invited responses over a seven-week period from 10 May 2021 to 30 June 2021.

What our Equestrian Community told us

If we had a great network of trails, the entire community would benefit

Better maintained trails, signage and road speed reduction devices are needed

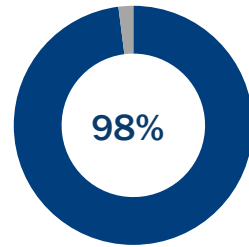
The parking facilities are not enough to cater for visiting trails with horses

There are insufficient loops and links of roadside and off-road trails, especially in settings away from traffic

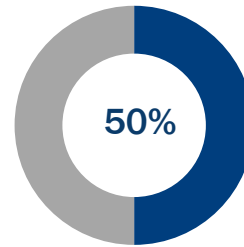
Improving engagement methods with reserve user groups will ensure widespread benefits result from equestrian facility investment

Please look after equestrians, we love our trails and look forward to more being accessible and readily maintained

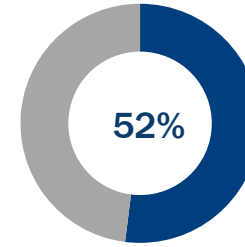
Equestrian Community Survey



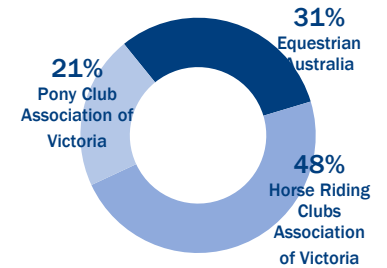
Respondents who ride or own a horse were female



Respondents were aged 45-64 years old



Respondents are members of an official equestrian body

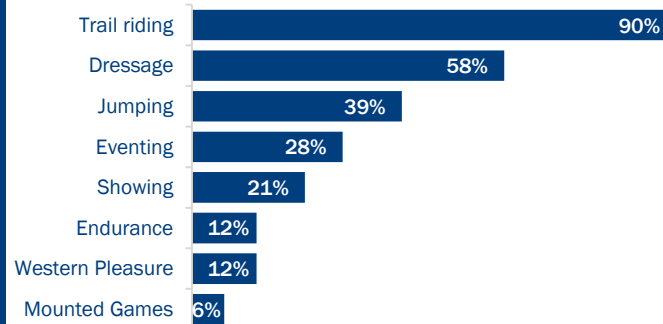


Top 3 official equestrian body membership by respondent

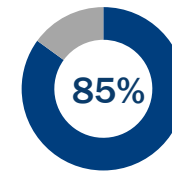
Total Responses

251

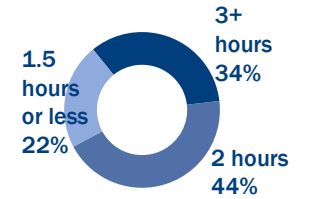
Most common equestrian activities in Cardinia Shire



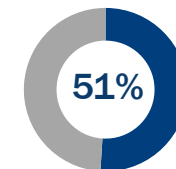
How can Cardinia Shire Council better engage with the equestrian community



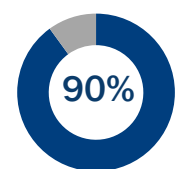
Respondents ride along multi-use equestrian trails



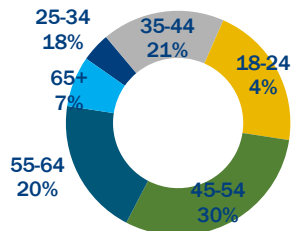
Respondents average usage time of equestrian trails (per ride)



Respondents said there is no safe float parking for off road trails



Respondents transport their horse to participate in equestrian activities



Age of respondents

Equestrian Facilities – Classification and Provision

Equestrian Trails and Facilities

Our community told us that the most popular equestrian trails and facilities in Cardinia Shire are...

BUNYIP STATE PARK*

KURTH KILN REGIONAL PARK*

CARDINIA AQUEDUCT TRAIL

CANNIBAL CREEK RESERVE

RJ CHAMBERS RESERVE

HUXTABLE ROAD RESERVE

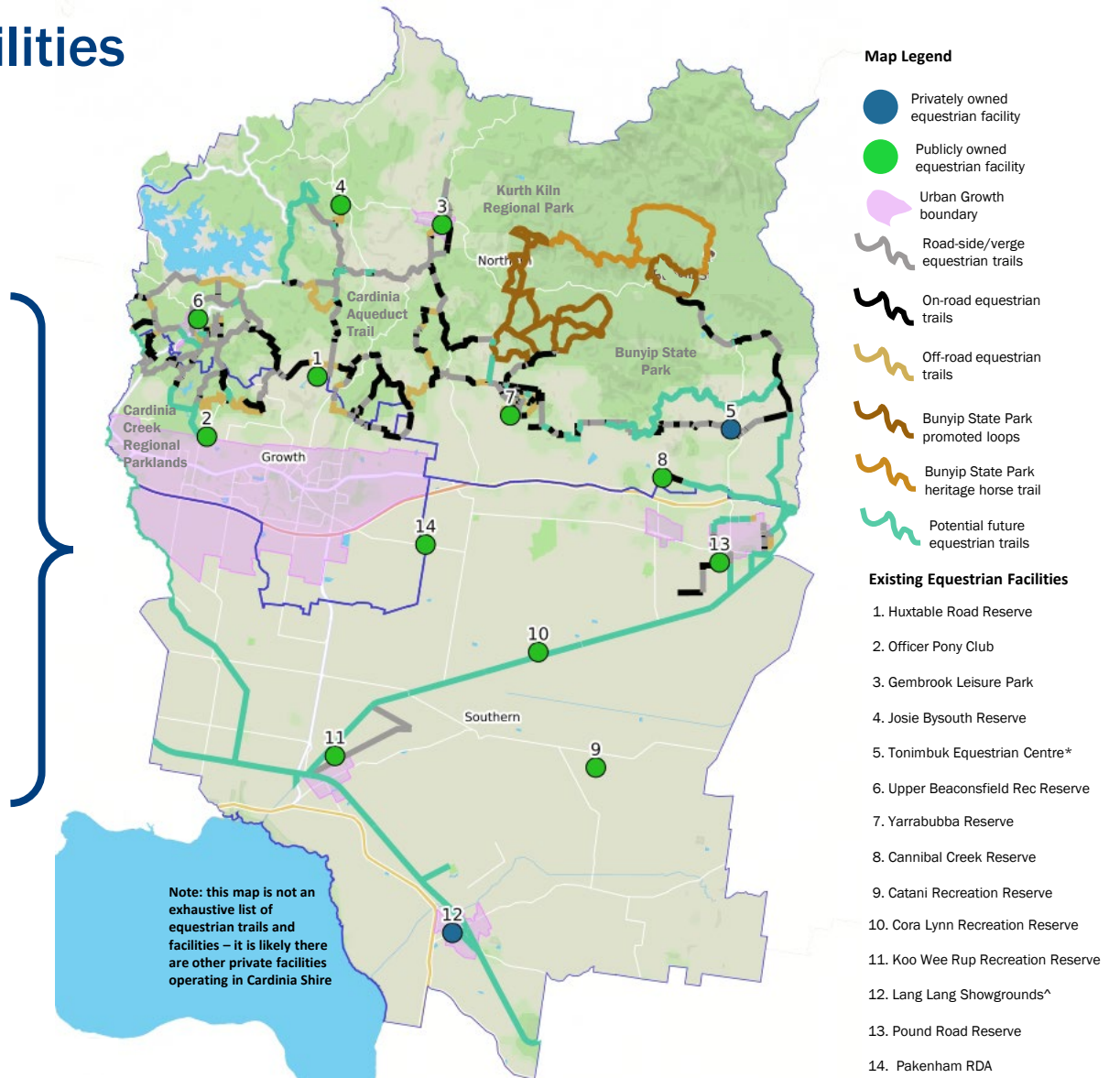
JOSIE BYSOUTH RESERVE

TONIMBUK EQUESTRIAN CENTRE^

YARRABUBBA RESERVE

*Public land managed by Parks Victoria

^Facility privately owned or other land management arrangement



Provision of Equestrian Facilities

There are 24 equestrian clubs and 14 equestrian facilities provided across Cardinia Shire that vary in classification and use.

As outlined within the Cardinia Shire 'Active Cardinia' Strategy (2023) equestrian facilities have a preferred ratio of one facility to every 100,000 people. Ratios are used in sports facility planning to ensure adequate provision of infrastructure. These ratios however are a guide only as it is recognised that not all sports and facilities are considered equal. There are many other factors that guide sports facility provision, such the location of infrastructure, how easily it is accessed, its condition, what type of components each facility possesses and how much the community uses them.

Cardinia Shire currently has a ratio of 1 equestrian facility to every 9,278 people. This is expected to increase to 1 facility per 12,303 people by 2034. Whilst this is significantly lower than the preferred ratio, Cardinia Shire Council acknowledges the popularity of equestrian in the community and that its facilities are well utilised. Council will monitor the usage of equestrian facilities and may reconsider provision should demand for equestrian change in the future.

1 : 9,278

2024 equestrian facility to population ratio

1 : 12,303

2034 equestrian facility to population ratio

1

Regional facility

3

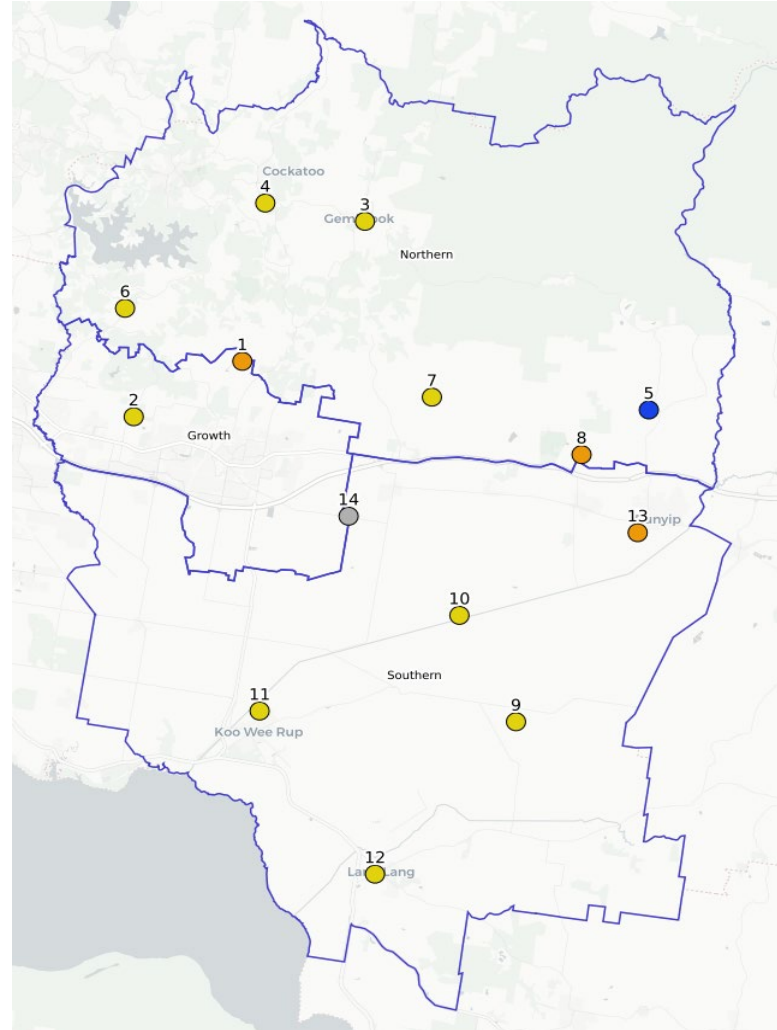
District facilities

9

Neighbourhood facilities

1

Riding for the Disabled Assoc. facility



Map Legend

- Regional facility classification
- District facility classification
- Neighbourhood facility classification

1. Huxtable Road Reserve
2. Officer Pony Club
3. Gembrook Leisure Park
4. Josie Bysouth Reserve
5. Tonimbuk Equestrian Centre*
6. Upper Beaconsfield Rec Reserve
7. Yarrabubba Reserve
8. Cannibal Creek Reserve
9. Catani Recreation Reserve
10. Cora Lynn Recreation Reserve
11. Koo Wee Rup Recreation Reserve
12. Lang Lang Showgrounds*
13. Pound Road Reserve
14. Pakenham RDA^

*Facility privately owned or other land management arrangement
^Pakenham RDA excluded from facility classification due to unique operation and function

Equestrian Facilities

Equestrian facilities in Cardinia Shire are characterised by a range of infrastructure components and management types.

Equestrian facilities are mostly publicly accessible and tenanted by one or multiple incorporated bodies such as reserve committees, pony clubs, adult riding clubs or other not-for-profit interest groups. Of the 14 equestrian facilities in Cardinia Shire, six (6) have multiple user groups.

Equestrian facilities in Cardinia Shire are likely to include the following infrastructure components:

- Riding arenas
- Club rooms
- Toilets
- Horse yards
- Parking areas
- Storage



Huxtable
Road
Reserve

Equestrian facilities are managed via a range of agreements and arrangements, including:

Community Asset Committees: A Cardinia Shire Council appointed Committee where Council is the landowner or designated land manager. Community Asset Committees receive an annual contribution from Cardinia Shire Council towards facility maintenance. Community Asset Committees are generally responsible for the upkeep of riding arenas and buildings, whilst Cardinia Shire Council maintains the surrounds. Community Asset Committees are further supported by Cardinia Shire Council through club development and training initiatives, receive support to advocate for infrastructure improvements and are eligible for capital contributions via Council's cyclical budgets and grant funding programs.

Facilities include: Yarrabubba Reserve, Josie Bysouth Reserve, Pound Road Reserve and Huxtable Road Reserve.

Committees of Management: Appointed by the Department of Energy, Environment and Climate Action (DEECA) through the Crown Land (Reserves) Act 1978 on Crown owned and managed land. Committees of Management are supported by Cardinia Shire Council through an annual contribution towards facility maintenance, club development and training initiatives, support to advocate for infrastructure improvements and are eligible for Council's grant funding programs.

Facilities include: Cannibal Creek Reserve, Upper Beaconsfield Recreation Reserve, Cora Lynn Recreation Reserve and Koo Wee Rup Recreation Reserve, Catani Recreation Reserve.

Lease Agreement: Land owned by Cardinia Shire Council and leased to incorporated associations/not-for-profit organisations. Leased facilities are supported by Cardinia Shire Council through club development and training initiatives, receive support to advocate for infrastructure improvements and are eligible for contributions via Council's grant funding program.

Facilities include: Officer Pony Club, Gembrook Leisure Park and Pakenham Riding for the Disabled Association.

Privately owned / other: Equestrian facilities that are privately owned or managed via an agreement not mentioned above. Public access may or may not be available. These facilities are supported by Cardinia Shire Council through club development and training initiatives and receive support to advocate for infrastructure improvements.

Facilities include: Tonimbuk Equestrian Centre, Lang Lang Showgrounds.

Equestrian Facilities Classification

A facility classification helps land managers to understand each facility's reach, function and likely infrastructure components. Equestrian facilities in Cardinia Shire are categorised into three levels of classification - neighbourhood, district and regional.

The previous 2014 Equestrian Strategy noted the need to review the current equestrian classification and each facility's categorisation. The new classification (adjacent) has been developed to guide provision to 2034.

Whilst private equestrian centres are outside of Cardinia Shire Council's control and influence, it is important that they are recognised for the role that they play in servicing the needs of residents and visitors to the region. These venues should therefore be considered amongst the network to avoid an unnecessary duplication of facilities and resources.

The facility classification is to be used as a guide only and that each facility may or may not include all infrastructure components listed.

Where equestrian facilities are co-located or shared with other sporting codes, infrastructure and amenities may be shared within the broader reserve footprint to service multiple user groups.

The likely facility components of each facility classification include...

	Neighbourhood	District	Regional
Size	Small (1ha - 9ha)	Medium (10 - 25ha)	Large (30+ ha)
Catchment/reach	Surrounding townships	Within and directly outside municipal boundary	Across municipal boundaries
Function	Club activities and informal public use	Club activities (multiple clubs) + local events + some informal public use	Multiple club activities + regional events
Riding arena or areas	1-2 arenas	2+ arenas Open space riding areas	Multiple arenas for a range of disciplines
Cross country course	Case by case (informal cross-country course may be available)	✓	✓
Club room facilities	Basic facilities, including toilets and storage	Club rooms and amenities for participants and spectators	Club rooms with change rooms, kitchen/kiosk, spectator amenities
Car/float parking	✓	✓	✓
Stabling/yards	Yards	Yards	Yards + stables
Accommodation	✗	✗	✓ (camping facilities)
Facilities include	Catani Recreation Reserve Cora Lynn Recreation Reserve Gembrook Leisure Park Josie Bysouth Reserve Koo Wee Rup Recreation Reserve Lang Lang Showgrounds Officer Pony Club Upper Beaconsfield Recreation Reserve Yarrabubba Reserve	Cannibal Creek Reserve Huxtable Reserve Pound Road Reserve	Tonimbuk Equestrian Centre

Equestrian Trails

Equestrian Trails in Cardinia Shire appear in a variety of settings – from road-side verges to regionally significant off-road trails.

The existing trail network in Cardinia Shire is outlined on page 16 of this document and includes road-side verges, on-road and off-road/shared trails (see examples adjacent).

The trail network has a range of landowners and maintainers, however most commonly, trails are the responsibility of:

Cardinia Shire Council: most equestrian trails within the municipal boundary are owned and maintained by Cardinia Shire Council. This predominately includes off-road, on-road and road-side trails (outside of those on main arterial roads). Cardinia Shire Council's Traffic and Transport team supports road safety education and infrastructure initiatives.

Parks Victoria: Oversees the management of a range of recreational activities while ensuring the protection of cultural and environmental values. Parks Victoria works in partnership with the community in the maintenance of a range of state managed assets. In Cardinia Shire this includes Bunyip State Park, Kurth Kiln Regional Park and Cardinia Creek Regional Parklands.

Department of Transport & Planning: responsible for road safety initiatives, speed limits and land management approvals for future trails including, where appropriate, the maintenance and/or delivery of trails.



Example 1: on-road trail



Example 2: road-side verge/trail



Example 3: off-road/shared trail

Vision and Objectives of the 2024 – 2034 Equestrian Strategy

VISION

To plan, deliver and maintain a network of connected trails and facilities that support our equestrian community to engage and participate in equestrian activities now and into the future

OBJECTIVES



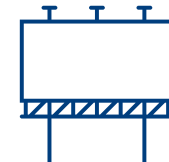
CONNECTED TRAILS AND FACILITIES

Plan and deliver well maintained, sustainable, connected, and fit for purpose equestrian trails and facilities where they are needed most and within available resources



PARTICIPATION AND EDUCATION

Increase equestrian participation and education through improved access and safe use of shared trails and facilities. Support our equestrian clubs and reserve committees to continue to be sustainable



PARTNERSHIPS AND PROMOTION

Enhance the promotion of equestrian trails and facilities in Cardinia Shire and cultivate partnerships to support the delivery of events and infrastructure

Strategic Outcomes of the Equestrian Strategy

The desired outcomes of the 2024 – 2034 Equestrian Strategy include...

CONNECTED TRAILS AND FACILITIES

Trails for a variety of uses and users

The existing and future trail network positively impacts on the equestrian community and encourages shared use and participation by others such as walkers and recreational cyclists.

Trails and facilities where they're most suited for our growing community

Trails and facilities are fit-for-purpose, well located, and informed by condition data and ongoing assessments, creating a transparent, fair and equitable distribution of infrastructure.

Environmental sustainability

Equestrian trails and facilities will not negatively impact on environmental and cultural values and will be delivered and upgraded to be considerate of the changing climate and natural landscape.

Deliverable recommendations that are achievable within available resources

Infrastructure is delivered within Cardinia Shire's financial capabilities and aligns with need, demand and can demonstrate community benefit.

PARTICIPATION AND EDUCATION

Social outcomes through equestrian participation

Sport and recreation, including equestrian, positively contributes to a happier and healthier community and a more socially connected Cardinia Shire.

Well supported and sustainable committees and clubs

Committees and clubs are well resourced, well run, empowered and capable to manage facilities, administration, participation and programs.

Increased education for safe shared trail use

Greater education for the community and equestrians for more informed and safer use of shared trails.

PARTNERSHIPS AND PROMOTION

Promotion of the equestrian network

Promotion and awareness of trails and facilities is increased through easily accessible information.

Economic outcomes for Cardinia Shire

The equestrian infrastructure network contributes to economic outcomes for Cardinia Shire through tourism and visitation.

Partnerships and collaboration with Cardinia Shire's community and other stakeholders

Greater partnerships with land managers, peak sporting bodies and the equestrian community that result in more positive outcomes in collaboration, investment and utilisation.

Key Recommendations

The key recommendations to achieve the Equestrian Strategy's vision, objectives and outcomes are identified below and on the subsequent pages. These are further explored in the Implementation Plan section of this report. Note that recommendations are not necessarily listed in priority order.



CONNECTED TRAILS AND FACILITIES

Plan and deliver well maintained, sustainable, connected, and fit for purpose equestrian trails and facilities where they are needed most and within available resources

- 1.1** Plan, deliver and maintain fit-for-purpose equestrian trails and facilities in line with their assigned classification.
- 1.2** Investigate and support the implementation of priority trails to improve connectivity.
- 1.3** Collaborate with reserve committees and clubs tenanted Council owned equestrian facilities to develop Facility Improvement Plans that guide collaborative infrastructure, supporting infrastructure, maintenance and renewal activities and shared use opportunities.
- 1.4** Support partner organisations in the provision, maintenance, connection and upgrade of key equestrian trails.
- 1.5** Ensure trails and facilities in culturally and environmentally significant areas are appropriately located, developed and regularly monitored to minimise negative environmental impact.
- 1.6** Actively seek and support grant funding applications and advocacy that aligns with the Strategy's recommendations.
- 1.7** Continue to support people of all abilities to participate in equestrian through Riding for the Disabled Association (RDA).
- 1.8** Ensure the safety of equestrians and road users through considered best practice and safe approaches to the planning of trails in high-speed road environments and amongst rail interfaces.
- 1.9** Continue to support the existing provision of equestrian facilities however monitor utilisation.

Key Recommendations

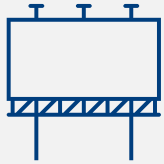


PARTICIPATION AND EDUCATION

Increase equestrian participation and education through improved access and safe use of shared trails and facilities. Support our equestrian clubs and reserve committees to continue to be sustainable

- 2.1** Review current equestrian facility user agreements, subsidies and contributions with reserve committees to ensure equitable use and to enhance broader community access.
- 2.2** Work with peak equestrian bodies to support and encourage programs, events and activities that are inclusive and drive participation outcomes.
- 2.3** Alongside the Victorian Government's Fair Access Roadmap, create equestrian facilities that are safe, accessible and supportive to ensure that people of all genders feel equally welcome to participate.
- 2.4** Proactively engage with committees and clubs through volunteer education and training initiatives delivered by Cardinia Shire Council, peak bodies and other government organisations. These initiatives will aim to empower committees and clubs to optimise their management and operations, as well as enhance programs and participation opportunities.
- 2.5** Undertake surveys to monitor the equestrian community's perceptions and evaluation of the Strategy's implementation and to monitor participation trends, trail and facility use.
- 2.6** Investigate the creation of an online resource (in conjunction with Recommendation 3.4) for the community to access information about Cardinia Shire's trails and facilities.
- 2.7** Leverage promotional opportunities outlined in the Active Cardinia Strategy that aim to connect the community with clubs and committees to support and increase participation outcomes.
- 2.8** Explore opportunities to increase education and safety awareness around the use of shared trails for both equestrians and the broader community.

Key Recommendations



PARTNERSHIPS AND PROMOTION

Enhance the promotion of equestrian trails and facilities in Cardinia Shire and cultivate partnerships to support the delivery of events and infrastructure

- 3.1** Collaborate with neighbouring Local Government Authorities and land managers to support the delivery, promotion and activation of connected equestrian trails and facilities, information sharing, management planning and connecting local clubs and businesses.
- 3.2** Acknowledge the role of private equestrian facilities in servicing the needs of the community and encourage greater communication and information sharing with Cardinia Shire Council and the equestrian community.
- 3.3** Work with government partners to advocate and promote the Equestrian Strategy and its recommendations and to leverage external funding opportunities.
- 3.4** Identify opportunities to promote and share information on equestrian trails and facilities utilising Cardinia Shire Council's online platforms.
- 3.5** Support tourism initiatives that promote and increase visitation to key equestrian trails and facilities in Cardinia Shire.
- 3.6** In partnership with stakeholders, undertake a 5 and 10 year review of the Equestrian Strategy's implementation.



Sub-region Summaries and Recommendations



Josie Bysouth Reserve

Growth Sub-region

Residential development in the Growth Sub-region has resulted in significant population increases and changes in land zoning. As a Sub-region that was traditionally popular for horse owners and riders, urban growth has impacted on the suitability of the area for equestrian, seeing only a small number of trails and facilities remain.

ABOUT THE GROWTH SUB-REGION

Localities:	Beaconsfield, Officer, Pakenham
2024 Population*:	89,954
2034 Population*:	127,979
2024 - 2034 Growth:	+38,025 (42%)
Equestrian Trails	Cardinia Creek Regional Parklands
Equestrian Facilities	Huxtable Road Reserve, Officer Pony Club, Pakenham Riding for the Disabled Association (RDA)

CHALLENGES

- Increasing population and vehicle traffic is not conducive with equestrian activities.
- Urban growth area development sees less suitable land available for equestrian trails and facilities.
- Aging infrastructure with some equestrian trails and facility infrastructure components in poor condition.
- Some committees/clubs are experiencing a lack of volunteers and therefore capacity to maintain facilities and infrastructure.

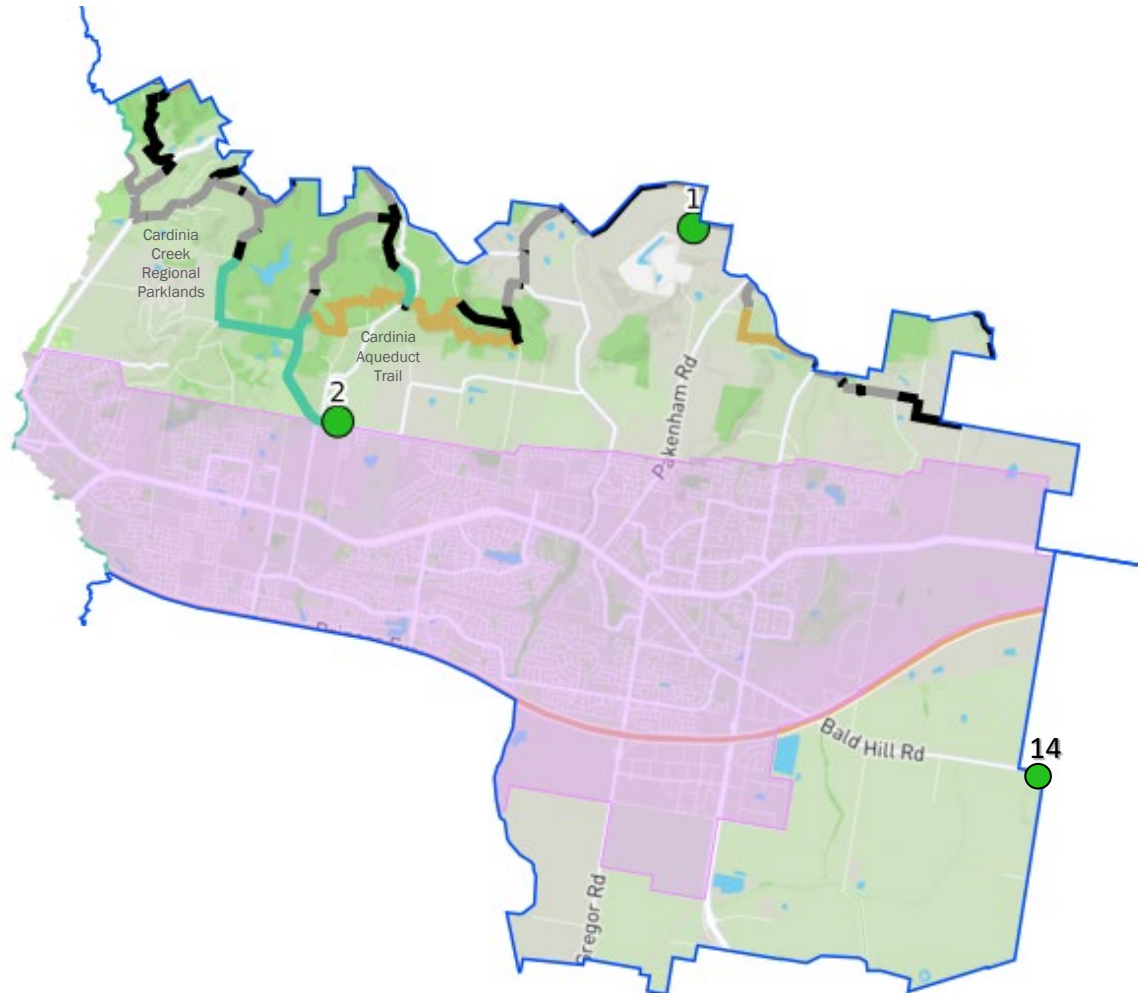
*source: <https://forecast.id.com.au/cardinia>

GROWTH SUB-REGION RECOMMENDATIONS

(as per pages 22 - 24)








- Continue to support the development of the Cardinia Aqueduct Trail as identified in Council's Pedestrian and Bicycle Strategy (2017).
- Support the implementation of the Cardinia Creek Regional Parklands Future Directions Plan led by the Department of Energy, Environment and Climate Action (DEECA) and project partners. This includes investigations to progressively implementing equestrian infrastructure including connecting trails.
- Develop a Facility Improvement Plan for Huxtable Road Reserve in partnership with reserve committees and user groups. This Plan will guide collaborative infrastructure, maintenance and renewal activities and shared use opportunities
- Continue to support people of all abilities to participate in equestrian through Riding for the Disabled Association (RDA).

Map of trails and facilities in the Growth Sub-region



- 1. Huxtable Road Reserve
- 2. Officer Pony Club
- 14. Pakenham RDA

Map Legend

-  Privately owned equestrian facility
-  Publicly owned equestrian facility
-  Urban Growth boundary
-  Road-side/verge equestrian trails
-  On-road equestrian trails
-  Off-road equestrian trails
-  Potential future trails

Northern Sub-region

The Northern Sub-region has stable population with limited forecasts and ample opportunity to support equestrian participation to 2034.

The Northern Sub-region is host to the majority of equestrian trails and facilities and due to its varied terrain, landscape, natural aesthetic and land zoning, will continue to serve as the key equestrian destination for the municipality. Facilities within the Northern Sub-region are also in high demand due to the impact of residential development in the Growth Sub-region.

ABOUT THE NORTHERN SUB-REGION

Localities:	Emerald, Cockatoo, Gembrook, Upper Beaconsfield, Maryknoll, Avonsleigh
2024 Population:	22,385
2034 Population:	22,869
2024 - 2034 Growth:	+485 (2%)
Equestrian Trails	Bunyip State Park, Kurth Kiln Regional Park, Cardinia Aqueduct Trail, RJ Chambers Reserve, Cannibal Creek Reserve
Equestrian Facilities	Josie Bysouth Reserve, Tonimbuk Equestrian Centre*, Yarrabubba Reserve, Upper Beaconsfield Recreation Reserve, Gembrook Leisure Park, Cannibal Creek Reserve

CHALLENGES

- Aging infrastructure with some infrastructure components in poor condition.
- Some committees experiencing a lack of volunteers and therefore capacity to maintain facilities and infrastructure.
- More sealed roads resulting in increased vehicle traffic and speed and reduced opportunity for equestrian activities.

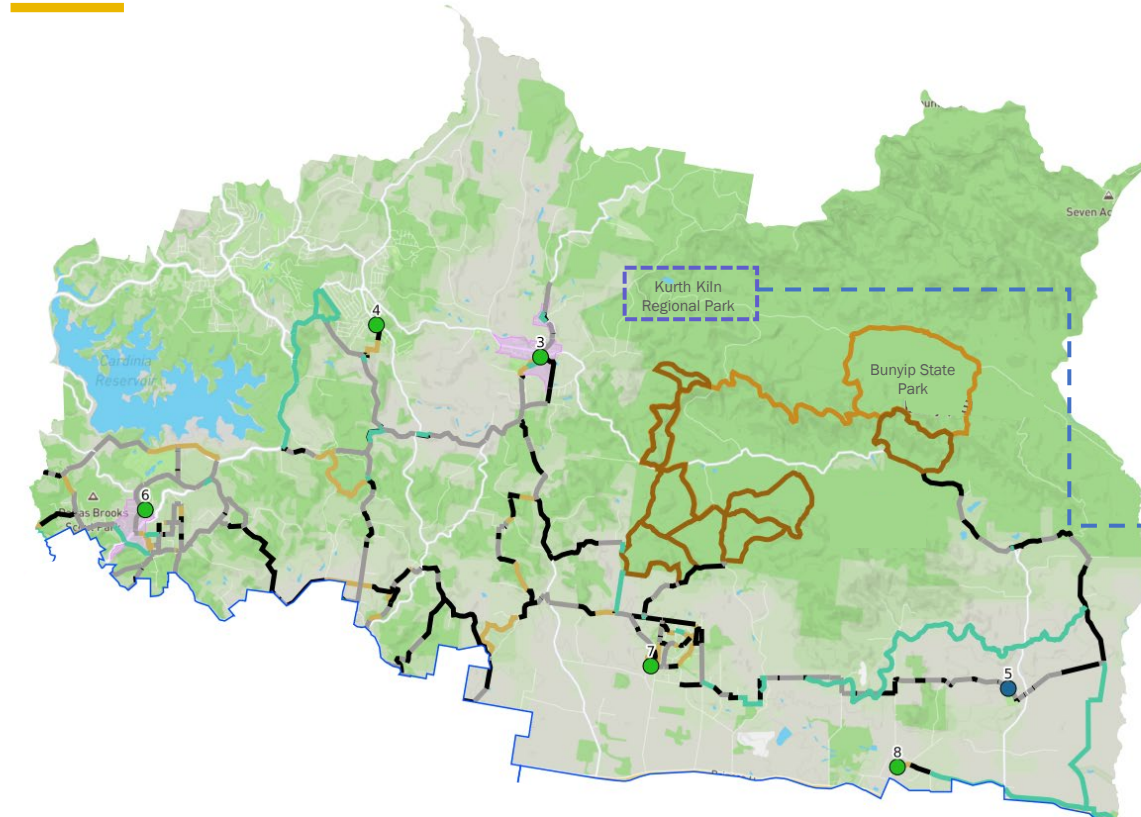
*privately owned facility

NORTHERN SUB-REGION RECOMMENDATIONS

(as per pages 22 - 24)

- Work with committees, clubs and land managers to identify ways to increase community access to existing equestrian facilities to promote greater use (pending facility capacity).
- Continue to support the development of the Cardinia Aqueduct Trail as identified in Council's Pedestrian and Bicycle Strategy (2017).
- Develop Facility Improvement Plans for Yarrabubba Reserve, Josie Bysouth Reserve and Gembrook Leisure Park in partnership with reserve committees and user groups. These Plans will guide collaborative infrastructure, maintenance and renewal activities and shared use opportunities.
- Partner with the Department of Transport & Planning to review road safety approaches and initiatives in areas with high equestrian use.
- Explore opportunities to partner with Parks Victoria to improve trails and facilities and create off-road trail links/loops (including Bunyip State Park, Kurth Kiln Regional Park).
- Implement proposed changes to the trail network following the equestrian trails audit. This includes the investigation and implementation of new trail connections, and the removal of trails from the network that are no longer supported due to lack of use/connection and/or where safety concerns are identified.
- Support the implementation of the Cardinia Creek Regional Parklands Future Direction Plan led by the Department of Energy, Environment and Climate Action (DEECA) and project partners. This includes investigations to progressively implementing equestrian infrastructure including connecting trails.

Map of trails and facilities in the Northern Sub-region

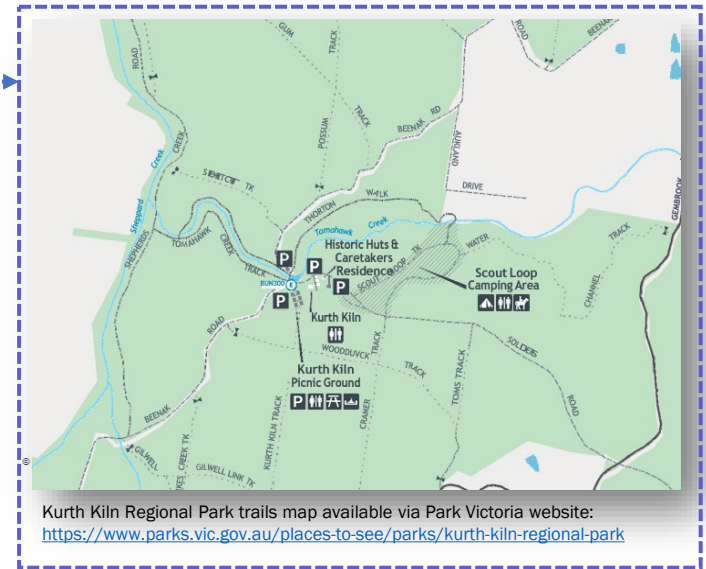


Map Legend

- Privately owned equestrian facility
- Publicly owned equestrian facility
- Urban Growth boundary
- Road-side/verge equestrian trails
- On-road equestrian trails
- Off-road equestrian trails
- Bunyip State Park promoted loops
- Bunyip State Park heritage horse trail
- Potential future trails

3. Gembrook Leisure Park
4. Josie Bysouth Reserve
5. Tonimbuk Equestrian Centre*
6. Upper Beaconsfield Recreation Reserve
7. Yarrabubba Reserve
8. Cannibal Creek Reserve

*Facility privately owned



Kurth Kiln Regional Park trails map available via Park Victoria website:
<https://www.parks.vic.gov.au/places-to-see/parks/kurth-kiln-regional-park>

Southern Sub-region

The Southern Sub-region is characterised by the main townships of Koo Wee Rup, Lang Lang, Garfield and Bunyip. The Southern Sub-region will see some population increase to 2034. Residential growth is likely to be attributed to the Officer South area, as outlined within the draft Office South Employment Precinct Structure Plan.

The Southern Sub-region is home to three publicly owned equestrian facilities as well as Lang Lang Showgrounds. With fewer designated trails than the Northern Sub-region, horse riders in the area are more likely to ride on-road, however growth in this Sub-region is impacting opportunities to do this safely.

ABOUT THE SOUTHERN SUB-REGION

Localities:	Koo Wee Rup, Lang Lang, Nar Nar Goon, Garfield, Bunyip, Officer South
2024 Population:	17,558
2034 Population:	21,406
2024 - 2034 Growth:	+3,848 (22%)
Equestrian Trails	Great Southern Rail Trail (proposed)
Equestrian Facilities	Pound Road Reserve, Koo Wee Rup Recreation Reserve, Cora Lynn Recreation Reserve, Pakenham Riding for the Disabled Association, Lang Lang Showgrounds

CHALLENGES

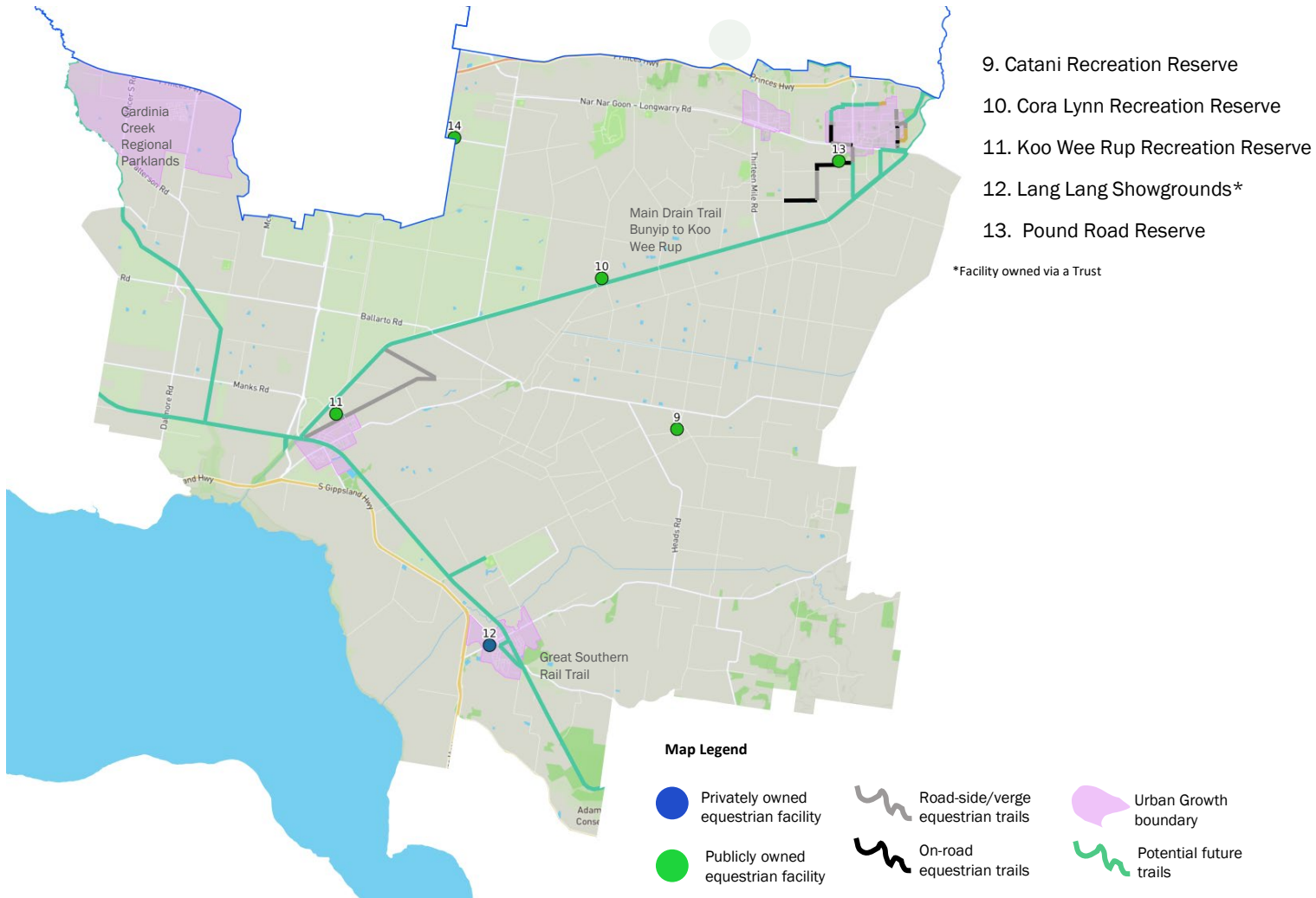
- Urban growth in townships such as Garfield, Bunyip, Koo Wee Rup, Lang Lang and Officer South sees land use zoning change, which impacts on equestrian participation, fewer equestrian properties, increased traffic and less use of trails.
- Delivering future trails that intersect with major road and rail infrastructure.
- Limited infrastructure provision.
- Competing access to infrastructure with other sporting codes

SOUTHERN SUB-REGION RECOMMENDATIONS

(as per pages 22 - 24)

- Support the advocacy and implementation of Council's Pedestrian and Bicycle Strategy (2017) including shared trails to support equestrian participation including the proposed Railway Towns Trail, Great Southern Rail Trail and Main Drain Trail.
- Investigate the development of a Facility Improvement Plan for Pound Road Reserve as a key facility due to its size and capability to support participation in the Southern Sub-region. The aim of the Plan will be to guide facility development, increase facility capacity and support greater community access, use and participation.
- Support the implementation of the Cardinia Creek Regional Parklands Future Direction Plan led by the Department of Energy, Environment and Climate Action (DEECA) and project partners. This includes investigations to progressively implementing equestrian infrastructure including connecting trails.
- Partner with the Department of Transport and Planning to review road safety approaches in areas with high equestrian use.

Map of trails and facilities in the Southern Sub-region



Implementation Plan



How We Will Deliver the Strategy

Working in partnership with stakeholders will ensure the best chances of success.

Cardinia Shire Council will continue to be the most significant sponsor and supporter of equestrian trails, facilities and clubs throughout the life of the Strategy through the provision of infrastructure, programs and initiatives. Delivery is dependent upon sufficient funds and resources, and partnerships with other levels of government, developers and other agencies/land managers. Funding sources to implement recommendations will include Council revenue, external contributions, grant funding and other asset managers/landowner contributions where facilities are not under Cardinia Shire Council's control.

Cardinia Shire Council will lead the implementation of the Strategy in accordance with the identified recommendations and Implementation Plan. If required, recommendations may require adjustment to respond to any unexpected changes including:

- Allocation of Council resources and funding
- Changes in State Government policy
- Changes in land use and development trends
- Other unexpected changes

Reserve committees will continue to be a significant partner in equestrian facilities and the significant role volunteers play in providing their time to upkeep and upgrade equestrian facilities is acknowledged, and support and education for volunteers is a priority to 2034.

The implementation of the Equestrian Strategy will be reviewed regularly and in line with Council's annual budget, with a full review at the completion of the ten-year period. Evaluating the progress of the Equestrian Strategy will require ongoing collection and collation of data, engagement with the community and analysis of participation trends.

Who will deliver the Strategy

Cardinia Shire Council

Lead the delivery of the Equestrian Strategy through projects and initiatives, develop partnerships with stakeholders and engage with the community. Cardinia Shire Council will support advocacy of stakeholders including clubs and committees in their pursuit of external funding to deliver strategic recommendations.

Community Asset Committees and Committees of Management

Reserve committees will be relied upon to continue to manage publicly owned venues and to assist Cardinia Shire Council to identify the ongoing needs and demand for equestrian and its infrastructure.

Government and other land managers

Other land managers will be relied upon to collaborate on the Strategy's implementation – from facility provision, ongoing maintenance and capital investment. Where applicable, grant funding and other opportunities will be leveraged through Cardinia Shire Council and other land managers to support the delivery of strategic recommendations.

Clubs and Peak Sporting Bodies

Local equestrian clubs and associations, such as Equestrian Australia, Equestrian Victoria, Pony Club Association of Victoria and Horse Riding Clubs Association of Victoria, will continue to be relied upon to deliver participation initiatives and events that support equestrians.

Investment Prioritisation Principles

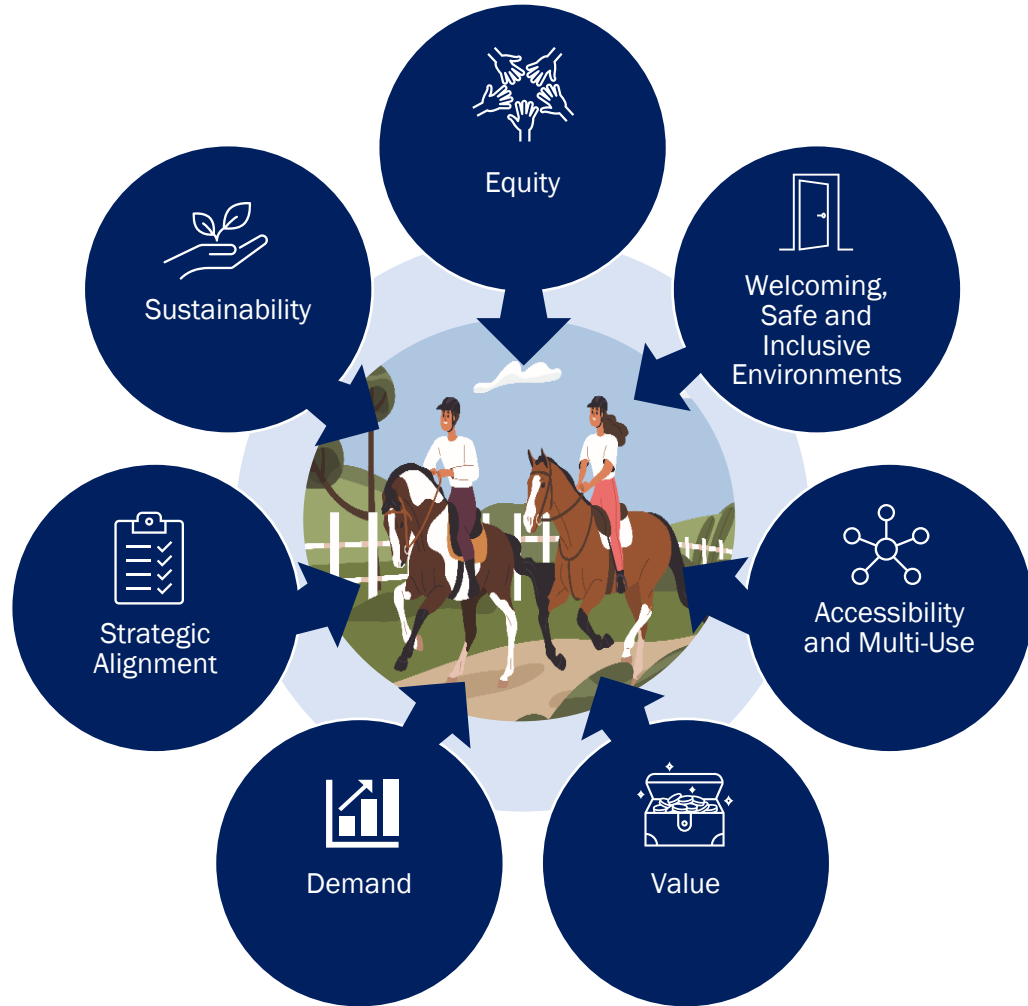
Investment prioritisation principles for the 2024 - 2034 Equestrian Strategy provide Cardinia Shire Council with a clear and transparent way to deliver and prioritise recommendations within the Strategy, as well as any other future trail and facility projects and initiatives.

These investment prioritisation principles will be utilised alongside Council's Strategic Direction identified in Our Strategies and Plans section of this report.

Other influencing documents for investment prioritisation include:

- Cardinia Shire Council's Asset Management Policy
- Cardinia Shire Council's Asset Plan

These principles are detailed further on the following page.



Investment Prioritisation Principles



Equity

Recommendations, projects and initiatives must be underpinned by clear need, and result in equitable investment and participation opportunities. This extends to improving and continuing opportunities for people of all genders including female participants who make up the majority of equestrians in Cardinia Shire.



Welcoming, Safe and Inclusive Environments

Recommendations, projects and initiatives must demonstrate how investment will support and improve the delivery of welcoming, safe and inclusive environments. This includes physical infrastructure as well as the intangible environment where people of all backgrounds and cultures are welcome, and where children feel and are safe.



Accessibility and Multi-Use

Recommendations, projects and initiatives must demonstrate multi-use and shared used outcomes resulting from investment (such as shared trails and/or greater community access to facilities).



Value

Investment must deliver value for Cardinia Shire Council, its stakeholders and community by demonstrating clear project management practices, timely delivery and reasonable budgets. Recommendations, projects and initiatives that offer opportunities to partner in investment and delivery are likely to be highly regarded.



Demand

Recommendations, projects and initiatives must be underpinned by data that can justify demand and establish positive legacy outcomes for the equestrian community.



Strategic Alignment

Alignment to the strategic objectives of the 2024 - 2034 Equestrian Strategy and the broader objectives of Cardinia Shire Council and its stakeholders must be demonstrated.



Sustainability

Recommendations, projects and initiatives must demonstrate sustainability from an environmental, financial, social and cultural perspective and that can also support greater operational efficiencies.

Implementation Plan

The following Implementation Plan outlines the key actions associated with each recommendation outlined in pages 22-24.



OBJECTIVE 1: CONNECTED TRAILS AND FACILITIES

Plan and deliver well maintained, sustainable, connected, and fit for purpose equestrian trails and facilities where they are needed most and within available resources

TIMEFRAMES
Short: 0 - 3 years
Medium: 4 – 6 years
Long: 7 – 10 years

No.	Recommendation	Actions	Timeframe
1.1	Plan, deliver and maintain fit-for-purpose equestrian trails and facilities in line with their assigned classification.	Utilise trail condition audit data and facility assessments undertaken as part of the Equestrian Strategy to develop a prioritised infrastructure improvement plan for equestrian facilities. Undertake periodic condition audit and facility assessments in alignment with Council’s Asset Management Policy (All Sub-regions) .	Short
		Utilise condition audit data undertaken as part of the Equestrian Strategy to outline a prioritised improvement plan for equestrian trails. This includes identifying upgrades to trails, trail-heads and all-weather car parking (All Sub-regions) .	Short
		Ensure equestrian trails and facilities managed by Council are identified on Council's maintenance program for regular inspections and maintenance (All Sub-regions) .	Short
		Work with Department of Transport & Planning and Cardinia Shire Council’s Traffic and Transport team to identify road safety improvements, initiatives and education in areas where there is high equestrian trail use. This includes the delivery of Cardinia Shire Council’s Road Safety Strategy’s recommendation to ‘Improve the safety of on-road and roadside horse-riding trails through appropriate signage, barriers and other measures’ (All Sub-regions) .	Ongoing
		Ensure the equestrian trail network is considered in town planning and road improvement projects so that identified trails are delivered generally in accordance with any adopted Precinct Structure Plans (All Sub-regions) .	Ongoing
1.2	Investigate and support the implementation of priority trails to improve connectivity.	Continue to investigate key trail connections identified in the Pedestrian and Bicycle Strategy, including: <ul style="list-style-type: none"> - Cardinia Aqueduct Trail Loop (Growth Sub-region) - Great Southern Rail Trail (Southern Sub-region) - Main Drain Trail (Southern Sub-region) 	Medium-Long
		Investigate the delivery of potential future trails and connections as identified in the Equestrian Strategy (see page 52) (All Sub-regions) .	Medium-Long
		Advocate for trail connections across Cardinia Creek between Casey and Cardinia as identified in existing Precinct Structure Plans (i.e. Minta, Clyde North and Cardinia Creek South) (Northern and Southern Sub-regions) and other future trails and destinations (i.e. Clyde Regional Park, Melbourne Water Retarding Basin).	Medium-Long

Implementation Plan

TIMEFRAMES
 Short: 0 - 3 years
 Medium: 4 – 6 years
 Long: 7 – 10 years

No.	Recommendation	Actions	Timeframe
1.2 Cont.	Investigate and support the implementation of priority trails to improve connectivity.	Work with neighbouring LGAs, other land managers and government agencies to ensure the connectivity of equestrian/shared use trails across land tenures and LGA boundaries (All Sub-regions) .	Ongoing
1.3	Collaborate with reserve committees and clubs tenanted Council owned equestrian facilities to develop Facility Improvement Plans that guide collaborative infrastructure, supporting infrastructure, maintenance and renewal activities and shared use opportunities.	In collaboration with reserve committees, develop Facility Improvement Plans to guide improved facilities, including parking, for Huxtable Road Reserve, Pound Road Reserve, Yarrabubba Reserve, Josie Bysouth Reserve and Gembrook Leisure Park. Facility Improvement Plan delivery will be dependent upon available funding and resources (All Sub-regions) .	Medium-Long
1.4	Support partner organisations in the provision, maintenance, connection and upgrade of key equestrian trails.	Partner with other land managers to support the delivery and advocate for investment in key equestrian trails, including: <ul style="list-style-type: none"> • Bunyip State Park (Growth Sub-region) • Kurth Kiln Regional Park (Growth Sub-region) • Cardinia Creek Regional Parklands (as identified in the Cardinia Creek Regional Parklands Future Directions Plan and Council's Pedestrian and Bicycle Strategy 2017) (Northern and Southern Sub-regions) 	Ongoing
1.5	Ensure trails and facilities in culturally and environmentally significant areas are appropriately located, developed and regularly monitored to minimise negative environmental impact.	New and existing trails are designed and managed to minimise negative impact on environmentally and culturally significant areas (All Sub-regions) .	Ongoing
1.6	Actively seek and support grant funding applications and advocacy that aligns with the Strategy's recommendations.	Review applications and provide letters of support to reserve committees, clubs and other land managers for grant funding applications that support strategic recommendations (All Sub-regions) .	Ongoing
1.7	Continue to support people of all abilities to participate in equestrian through Riding for the Disabled Association (RDA).	Continue to support the provision of an RDA facility in Cardinia Shire (Growth Sub-region) .	Ongoing
1.8	Ensure the safety of equestrians and road users through considered best practice and safe approaches to the planning of trails in high-speed road environments and in amongst rail interfaces.	Work with Department Transport and Planning and other land managers in the planning of future trails that prioritise the safety of all users (All Sub-regions) .	Ongoing
1.9	Continue to support the existing provision of equestrian facilities however monitor utilisation.	Continue to support the existing provision of equestrian facilities across Cardinia Shire. Monitor utilisation where required. Should an equestrian facility in Cardinia Shire become underutilised, Council may review their future purpose at that time (All Sub-regions) .	Ongoing

Implementation Plan



OBJECTIVE 2: PARTICIPATION AND EDUCATION

Increase equestrian participation and education through improved access and safe use of shared trails and facilities. Support our equestrian clubs and reserve committees to continue to be sustainable

TIMEFRAMES
 Short: 0 - 3 years
 Medium: 4 – 6 years
 Long: 7 – 10 years

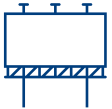
No.	Recommendation	Actions	Timeframe
2.1	Review current equestrian facility user agreements, subsidies and contributions with reserve committees to ensure equitable use and to enhance broader community access.	Undertake review of current user agreements with reserve committees and clubs (where applicable) (All Sub-regions) .	Short
		Undertake review of current subsidies and contributions to reserve committees (where applicable) to ensure sufficient resources available to manage facilities (All Sub-regions) .	Short
		Work with reserve committees and user groups to review public access arrangements to equestrian reserves with the aim to provide an equitable approach across all reserves and to enable greater community access and participation (All Sub-regions) .	Short
2.2	Work with peak equestrian bodies to support and encourage programs, events and activities that are inclusive and drive participation outcomes.	Support, encourage, promote and leverage participation programs and activities driven by peak bodies (All Sub-regions) .	Ongoing
2.3	Alongside the Victorian Government's Fair Access Roadmap, create equestrian facilities that are safe, accessible and supportive to ensure that people of all genders feel equally welcome to participate.	Implement the Victorian Government's Fair Access Roadmap requirements through Council's policies and strategies (All Sub-regions) .	Short
2.4	Proactively engage with committees and clubs through volunteer education and training initiatives delivered by Cardinia Shire Council, peak bodies and other government organisations. These initiatives will aim to empower committees and clubs to optimise their management and operations, as well as enhance programs and participation opportunities.	Deliver volunteer development and training programs based on club needs and legislation requirements (All Sub-regions) . Topics can include, but not limited to: <ul style="list-style-type: none"> • Planning and management of infrastructure • Committee and club growth and sustainability • Facility and land management practices • Volunteer attraction and retention • Participation programs and initiatives • Diversity, equality and inclusion • Governance and administration tasks • Statutory requirements and reporting 	Ongoing

Implementation Plan

TIMEFRAMES
 Short: 0 - 3 years
 Medium: 4 – 6 years
 Long: 7 – 10 years

No.	Recommendation	Actions	Timeframe
2.5	Undertake surveys to monitor the equestrian community's perceptions and evaluation of the Strategy's implementation, and to monitor participation trends, trail and facility use.	Undertake regular surveys to check in with the community regarding the Strategy's implementation, monitor participation trends, trail and facility use (All Sub-regions) .	Annually
2.6	Investigate the creation of an online resource (in conjunction with Recommendation 3.4) for the community to access information about Cardinia Shire's trails and facilities.	Investigate an online platform available on Council's website to share resources and material including how to best use and enjoy trails, the expectations of all user types and appropriate behaviour around horses (All Sub-regions) .	Medium
2.7	Leverage promotional opportunities outlined in the Active Cardinia Strategy that aim to connect the community with clubs and committees to support and increase participation outcomes.	Leverage events, promotions and activities associated with the Active Cardinia Strategy to support equestrian clubs and committees to improve participation opportunities (All Sub-regions) .	Ongoing
2.8	Explore opportunities to increase education and safety awareness around the use of shared trails for both equestrians and the broader community.	Work with land managers to develop educational materials and resources to support safe use of shared trails by both equestrians and the broader community. This includes initiatives such as appropriate wayfinding signage, road speed limits, and preventing access to areas that are not appropriate for use or have cultural or environmental significance (All Sub-regions) .	Ongoing

Implementation Plan



OBJECTIVE 3: PARTNERSHIPS AND PROMOTION

Enhance the promotion of equestrian trails and facilities in Cardinia Shire and cultivate partnerships to support the delivery of events and infrastructure

TIMEFRAMES
Short: 0 - 3 years
Medium: 4 – 6 years
Long: 7 – 10 years

No.	Recommendation	Actions	Timeframe
3.1	Collaborate with neighbouring Local Government Authorities and land managers to support the delivery, promotion and activation of connected equestrian trails and facilities, information sharing, management planning and connecting local clubs and businesses.	Investigate partnering with other LGAs, land managers, government agencies and key stakeholders to collectively provide and promote equestrian trails and facilities across the municipality (All Sub-regions) .	Ongoing
3.2	Acknowledge the role of private equestrian facilities in servicing the needs of the community and encourage greater communication and information sharing with Cardinia Shire Council and the equestrian community.	Connect with privately owned equestrian facilities to explore opportunities to promote activations and other events that support community participation (All Sub-regions) .	Ongoing
3.3	Work with government partners to advocate and promote the Equestrian Strategy and its recommendations and to leverage external funding opportunities.	Work with government partners to promote and advocate for the Strategy, its recommendations and timely delivery. Seek out opportunities to leverage funding opportunities that deliver strategic recommendations (All Sub-regions) .	Ongoing
3.4	Identify opportunities to promote and share information on equestrian trails and facilities utilising Cardinia Shire Council's online platforms.	Investigate the use of an online platform that identifies and promotes equestrian trails and facilities in Cardinia Shire. The platform will be publicly accessible and include information such as trail and facility maps, club contacts and details of supporting amenities and infrastructure (such as car parks, toilets, water points, riding areas etc) (All Sub-regions) .	Ongoing
3.5	Support tourism initiatives that promote and increase visitation to key equestrian trails and facilities in Cardinia Shire.	Work with Council's Arts, Advocacy and Economy Department to investigate opportunities to support equestrian businesses and events in Cardinia Shire to strengthen and support the equestrian community (All Sub-regions) .	Ongoing
3.6	In partnership with stakeholders, undertake a 5 and 10 year review of the Equestrian Strategy's implementation.	Undertake a review of the Equestrian Strategy's implementation alongside stakeholders to monitor progress and evaluate actions (All Sub-regions) .	2029 & 2034





Appendices



Equestrian Trail Categories

TRAIL CATEGORY	CHARACTERISTICS	PROPOSED MAINTENANCE STANDARDS
<p data-bbox="111 368 240 389">On-road trail</p>  <p data-bbox="111 701 354 722">Pooley Road, Tynong North</p>	<ul data-bbox="526 419 1442 701" style="list-style-type: none"> • Primarily located on unsealed local access or limited access roads (and some unsealed collector roads where required). • Low traffic volumes (<300 vehicles per day, where possible). Warning signs provided on roads with higher traffic volumes (i.e. 300-500 vehicles per day). • Low speed environment. • Located in rural settings. • Some ability to get off-road when required. • Good visibility. Sections of roadside trail or 'safety zones' may be required where visibility is reduced (i.e. on sharp bends). • NB: Horse riders/drivers are subject to the same rules as other vehicles under Victorian road rules 	<ul data-bbox="1483 419 1980 672" style="list-style-type: none"> • Trail width as per road. • Inspection and maintenance undertaken in accordance with road management plan and road classification (i.e. local access roads inspected once every 12 months or when alerted about an obstruction or hazard). • Where possible, the use of coarse crushed rock for maintenance works should be minimised (i.e. large, sharp rocks).
<p data-bbox="111 746 323 768">Off-road/shared trail</p>  <p data-bbox="111 1019 447 1041">Shared Trail - Cardinia Aqueduct Trail</p>  <p data-bbox="111 1262 223 1283">Off road trail</p>	<ul data-bbox="526 798 1442 1079" style="list-style-type: none"> • Located in bushland reserves, along open space corridors, unused road reserves or fire access tracks. • Natural or constructed trail surface depending on location and usage levels. Surfaces should generally be smooth and compacted, free of obstacles (i.e. potholes) and include adequate drainage. • Directional signage to be provided at key access points. Other signage may include distance markers and behavioural signs (i.e. code of conduct for minimal impact and shared use). Warning signage provided for road crossings. • Float parking and some supporting infrastructure required for major trails. • Cavalettis (and gates) are often required to restrict unauthorised motorbike/vehicle access. 	<ul data-bbox="1483 798 1980 1283" style="list-style-type: none"> • Trail width varies depending on the surrounding environment. 2.5m – 4m is preferred to minimise user conflict. • Vegetation maintained to provide 3m - 6m wide and 3.3m vertical clearances (depending on location) note that clearance guidelines cannot always be achieved or maintained. • Sustainable trail design and construction, including water sensitive urban design and erosion control design features. • Inspections undertaken four times per year and following major storm events. • Maintenance works conducted following inspections or when alerted to a hazard. • Trail maintenance to control weeds, remove obstructions and manage erosion (where necessary).

Equestrian Trail Categories


TRAIL CATEGORY	CHARACTERISTICS	PROPOSED MAINTENANCE STANDARDS
<p data-bbox="109 372 323 396">Road-side verge/trail</p> <div data-bbox="109 448 526 758">  </div> <p data-bbox="109 772 530 796">St Georges Road, Upper Beaconsfield (Natural)</p> <div data-bbox="109 846 526 1156">  </div> <p data-bbox="109 1170 499 1195">Mirrabooka Road, Maryknoll (Constructed)</p>	<ul data-bbox="584 418 1396 622" style="list-style-type: none"> • Wide road side verges, with sufficient clearing in roadside vegetation. • Preference for trails alongside unsealed roads with low traffic volumes and speed, but other roads can be used where sufficient set-back/separation can be achieved. • Free from unauthorised barriers (i.e. fences and landscape planting by adjoining property owners). • Located on roadsides with low environmental values (where possible). • Warning signage required for road crossings (for roads with high traffic volumes). <p data-bbox="584 715 696 739">Natural trail</p> <ul data-bbox="584 748 1396 922" style="list-style-type: none"> • Natural surfaces are preferred in most instances • Some obstacles are likely (i.e. rocks, tree roots etc.). • Natural drainage, except where significant issues exist. Access may be limited in wet weather. • Some on-road riding may be required if road verge is too narrow or heavily vegetated in some sections (on unsealed roads with clear lines of site) <p data-bbox="584 958 737 982">Constructed trail</p> <ul data-bbox="584 991 1396 1100" style="list-style-type: none"> • Constructed surfaces with compacted crushed rock/granite surface and drainage as required. • Generally required for heavily used trails or those located in built up areas or alongside sealed roads where clear delineation is needed. 	<ul data-bbox="1440 425 1991 711" style="list-style-type: none"> • Vegetation maintained to provide 1.6m – 3m wide and 3.3m vertical clearances note that clearance guidelines cannot always be achieved or maintained. • Natural or constructed barriers may be required in some instances to achieve adequate separation from roads or to help direct horse riders in sensitive areas. • Inspected twice a year and following major storm events (in accordance with gravel footpaths). • Maintenance works conducted following inspections or when alerted to a hazard. <p data-bbox="1440 743 1556 768">Natural trail</p> <ul data-bbox="1440 772 1991 996" style="list-style-type: none"> • Trail width to maintain the natural form of the trail. Approximate width 1.5m - 2.5m. • Modified trail surface may be required in steep or wet sections (through use of crushed rock or culvert crossings) or where additional guidance on trail direction is required. • Trail maintenance to control weeds, remove obstructions and manage erosion (where necessary) <p data-bbox="1440 1029 1597 1053">Constructed trail</p> <ul data-bbox="1440 1058 1991 1193" style="list-style-type: none"> • Preferred width of 2m – 3m (where possible) to minimise user conflict. • Trail maintenance to address pot holes/erosion, humps, grass/vegetation encroachment and slippery/muddy areas.

Equestrian Participation by Club and Facility


Facility name	Size	Owner	Tenure	Classification	Equestrian user group	2022 no. of participants
Cannibal Creek Reserve	14.8ha	Crown	Committee of Management (State Government appointed)	District	Cannibal Creek Pony Club	30
					Mt Cannibal Adult Riding Club	30
					West Gippsland Quarter Horse Association	90
					West Gippsland Aust. Stock Horse Branch	50
Catani Recreation Reserve	2.1ha	Crown	Committee of Management (State Government appointed)	Neighbourhood	Gippsland Pleasure Harness Society	20
Cora Lynn Recreation Reserve	3ha	Crown	Committee of Management (State Government appointed)	Neighbourhood	Cora Lynn Show Jumping Club	178
Gembrook Leisure Park	0.7ha	Council	Lease	Neighbourhood	Gembrook Riding Club	35
Huxtable Road Reserve	18.6ha	Council	Community Asset Committee	District	Pakenham Upper Riding Club	60
					Pakenham Pony Club	26
Josie Bysouth Reserve	3.8ha	Council	Community Asset Committee	Neighbourhood	Cockatoo and District Pony Club	58
					Cockatoo and District Riding Club (inactive)	-
Koo Wee Rup Recreation Reserve	1.7ha	Crown	Committee of Management (State Government appointed)	Neighbourhood	Koo Wee Rup Horse Riders Club	70
Lang Lang Showgrounds	7ha	Trust	LL Pastoral, Agricultural and Horticultural Association	Neighbourhood	Port Phillip Show Jumping Club	30
Officer Pony Club	3.7ha	Crown	Lease (Council the Committee of Management)	Neighbourhood	Officer Pony Club	22
					Officer Equestrian Club	14
Pakenham Riding for the Disabled Association	8ha	Council	Lease	Leased facility	Pakenham Riding for the Disabled Association	TBA
Pound Road Reserve	20ha	Crown	Community Asset Committee (State Government owned, Council appointed Community Asset Committee)	District	Bunyip and District Pony Club	42
					Lillico and District Pony Club	77
					Bunyip Equestrian Club	42
Tonimbuk Equestrian Centre	30+ha	Private	Private	Regional	Tonimbuk Equestrian Club	85 (2012 figure)
Upper Beaconsfield Recreation Reserve	3.1ha	Crown	Committee of Management (State Government appointed)	Neighbourhood	Upper Beaconsfield Riding Club	30
					Upper Beaconsfield Pony Club	23
Yarrabubba Recreation Reserve	2.3ha	Council	Community Asset Committee	Neighbourhood	Nar Nar Goon Riding Club	9
					Nar Nar Goon Pony Club	25
					TOTAL	1,046

Map of Potential Future Trails and Connections

Cardinia Shire

 Potential future trails

 Privately owned equestrian facility






 Publicly owned equestrian facility

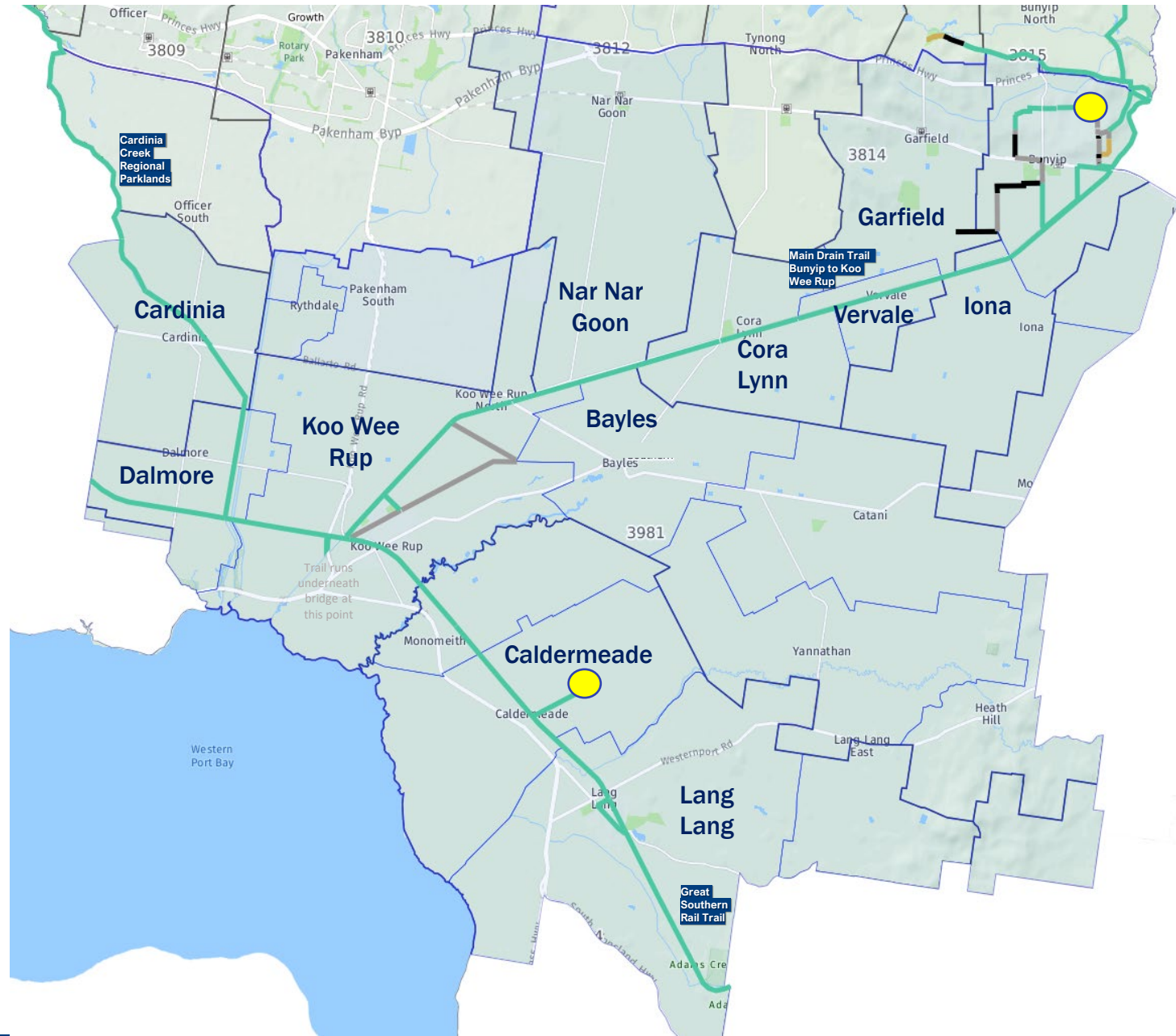
- | | |
|-----------------------------------|------------------------------------|
| 1. Huxtable Road Reserve | 8. Cannibal Creek Reserve |
| 2. Officer Pony Club | 9. Catani Recreation Reserve |
| 3. Gembrook Leisure Park | 10. Cora Lynn Recreation Reserve |
| 4. Josie Bysouth Reserve | 11. Koo Wee Rup Recreation Reserve |
| 5. Tonimbuk Equestrian Centre | 12. Lang Lang Showgrounds |
| 6. Upper Beaconsfield Rec Reserve | 13. Pound Road Reserve |
| 7. Yarrabubba Reserve | 14. Pakenham RDA |



Small Area Map 1





Southern Sub-Region

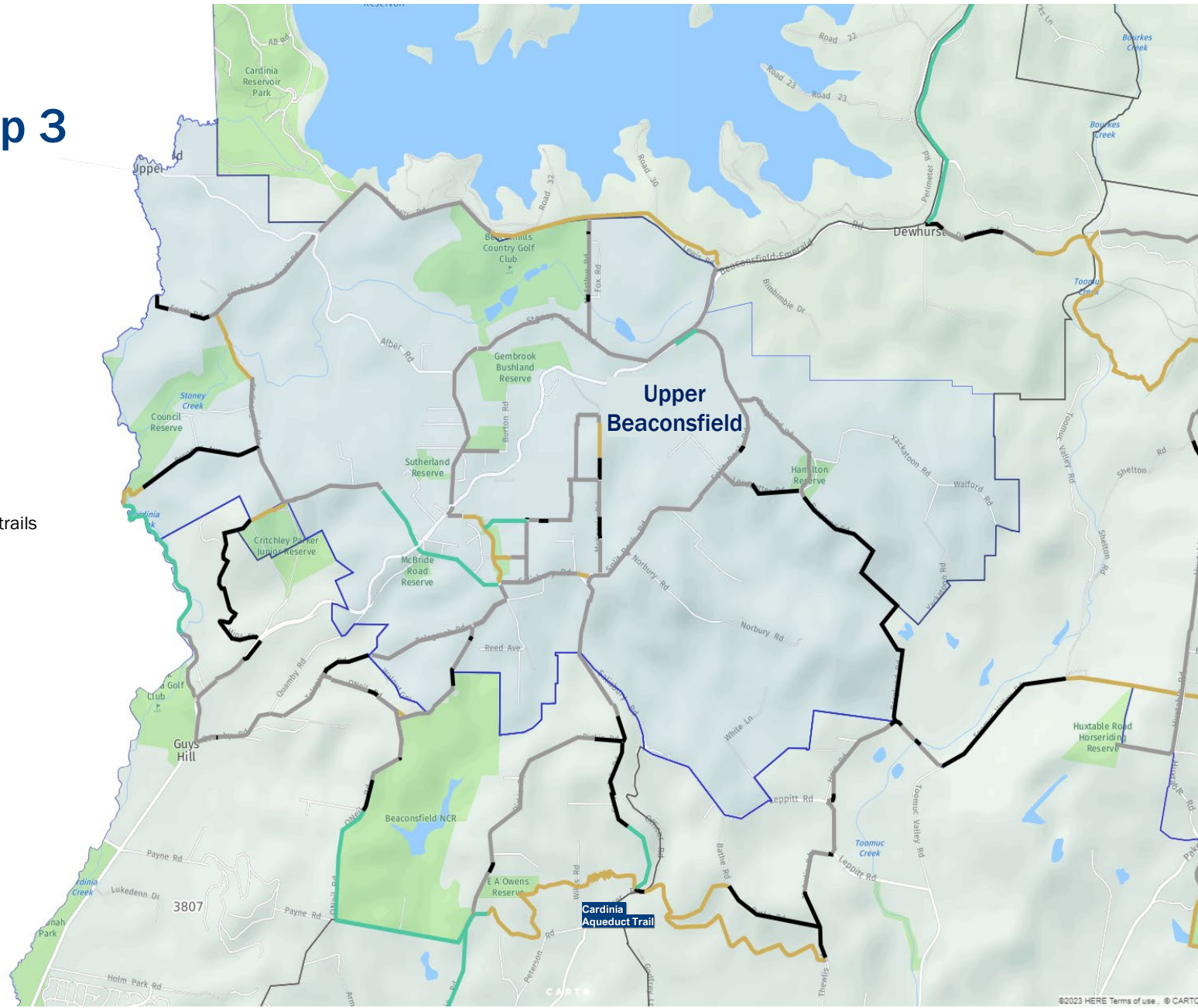
-  Potential future trails
-  Road-side/verge equestrian trails
-  On-road equestrian trails
-  Off-road equestrian trails
-  Equestrian facility



Small Area Map 3






Upper Beaconsfield

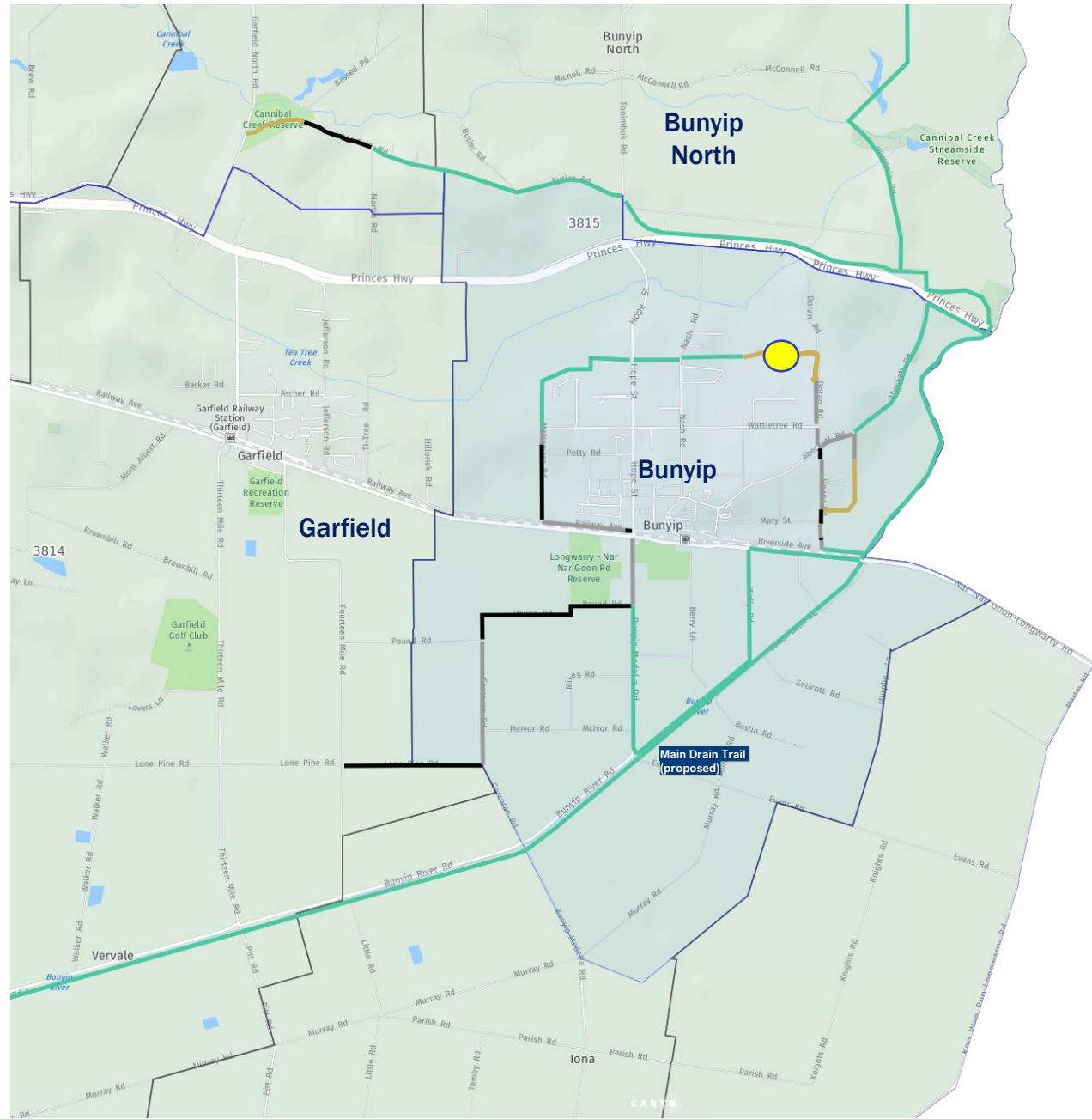
-  Potential future trails
-  Road-side/verge equestrian trails
-  On-road equestrian trails
-  Off-road equestrian trails



Small Area Map 4







Bunyip and surrounds

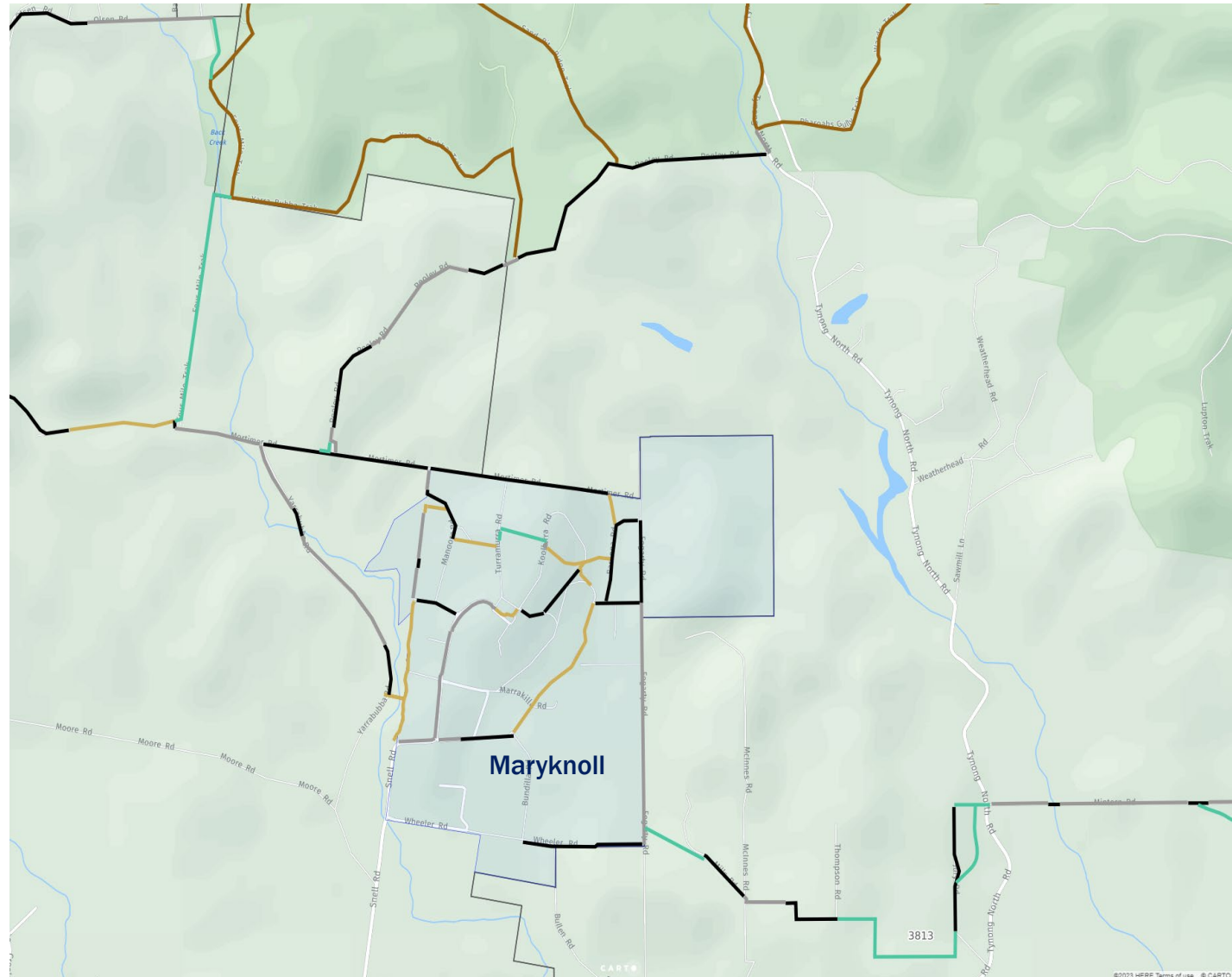
-  Potential future trails
-  Road-side/verge equestrian trails
-  On-road equestrian trails
-  Off-road equestrian trails
-  Equestrian facility



Small Area Map 5

Maryknoll and surrounds

-  Potential future trails
-  Road-side/verge equestrian trails
-  On-road equestrian trails
-  Off-road equestrian trails
-  Bunyip State Park promoted loops
-  Bunyip State Park heritage horse trail







Cardinia Shire Council
Civic Centre
20 Siding Avenue, Officer

PO Box 7
Pakenham 3810 (DX 81006 Pakenham)

Phone: 1300 787 624
Email: mail@cardinia.vic.gov.au
Web: cardinia.vic.gov.au

National Relay Service (NRS)
TTY: 133 677 (ask for 1300 787 624)
Speak and Listen (speech-to-speech relay):
1300 555 727 (ask for 1300 787 624)

Translator Interpretation Service
131 450 (ask for 1300 787 624)